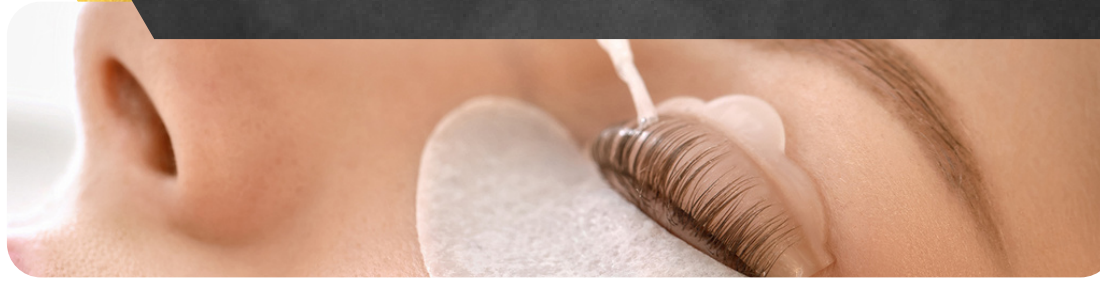




# LASH LIFT



## WHAT IS LASH LIFT TINT

A lash lift tint is essentially a perm for your natural lashes. This is an all-natural, semi-permanent procedure that gives you the appearance of fuller, thicker eyelashes without the use of any leave-on chemicals or extensions. The natural lashes are boosted from the root, giving them a lifted, lengthened appearance. It is relatively a low-maintenance process. Expect the whole thing to take about 45-60 minutes. We may require a patch test 48 hours before your appointment to ensure you don't have a reaction to the solutions used. Lashes can be long or short, but must be at least 4mm to get the service.

## 2-STEP PROCESS OF GETTING A LASH LIFT TINT:

- 1. We start every treatment with a thorough consultation to determine what kind of lash style you are looking to achieve. Your therapist will then pick a suitable curling rod size to shape the lashes.*
- 2. The eye area will be cleaned up and place a silicone rod onto the eyelids. The natural lashes are then curled over and attached to the rod with an adhesive to set the lashes. Once the therapist ensures everything is positioned correctly, a lifting lotion is applied to allow the lashes to mold around the curling rod, followed by a setting lotion that sets the lash shape.*

## HOW TO PREPARE FOR THE TREATMENT DAY:

- *Don't wear makeup*
- *Remove contact lenses for comfort prior to the procedure, if you wish.*
- *Avoid curling lashes 24 hours prior to your appointment.*
- *Avoid waterproof mascara for 48 hours prior to your appointment.*
- *Avoid using oils and multiple skin care products around the eye.*
- *Avoid eye masks and eyelash curlers.*
- *Be aware of how often you rub your eyes, and try to avoid doing so if possible.*

## IMMEDIATE AFTERCARE

*What you do immediately after getting a lash lift can have a big impact on how long the treatment lasts. It can take up to 48 hours for the treatment to set in so it's important to hold off on cleansing around the eyes or applying makeup for 48 hours in order to allow the lift to set.*

## LONG-TERM LASH CARE

*After the initial 48 hours have passed, there are still things you can do to ensure that your lash lift lasts as long as possible.*