



HILLWOOD
HOMES

SKYE MEADOWS

BLOSSOM PLAN

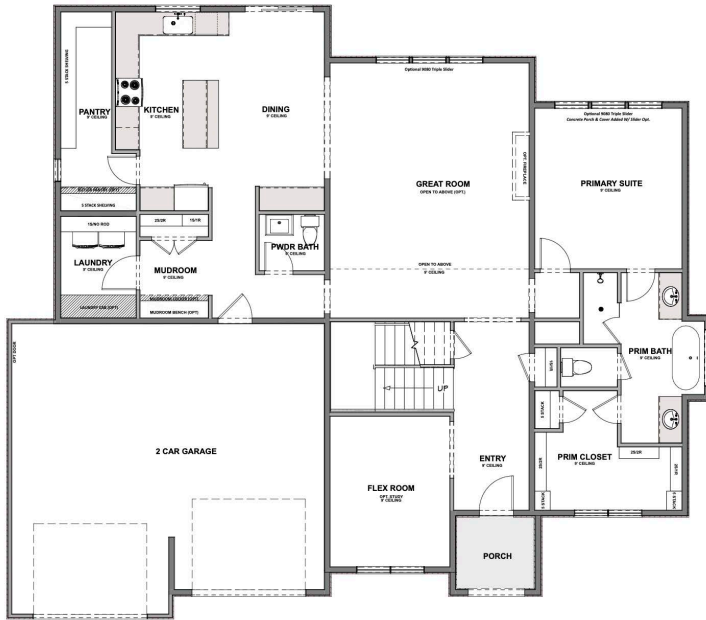


4 - 8 BEDROOMS | 3.5 - 5.5 BATHROOMS | 2 - 4 CAR GARAGE
3,269 FINISHED SQ. FT. | 5,266 TOTAL SQ. FT.

HOME FEATURES

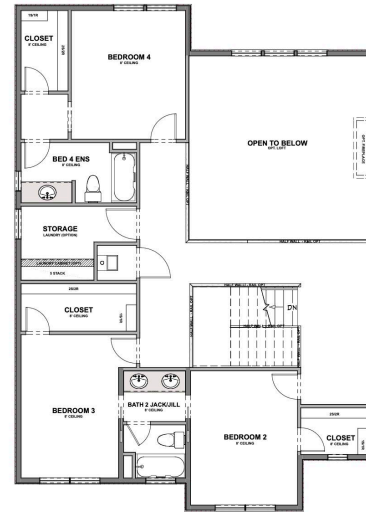
- Primary Bedroom on Main Floor
- Open Kitchen and Living Room
- Kitchen Island
- Master Bedroom Walk-in Closet
- Mud and Laundry Room off Garage
- 9' Ceilings on Main Floor and Basement
- 8' Doors on Main Floor
- Quartz Countertops in Kitchen and Bathrooms
- Tile Flooring in Bathroom and Laundry
- Moen Gibson Chrome plumbing fixtures
- Stainless Steel Whirlpool Appliances
- Energy Saving Low-E Dual Glazed White Vinyl Windows
- Full Front Yard Landscaping with Automatic Sprinkler System

MAIN FLOOR
Approx 1,997 SQ. FT.

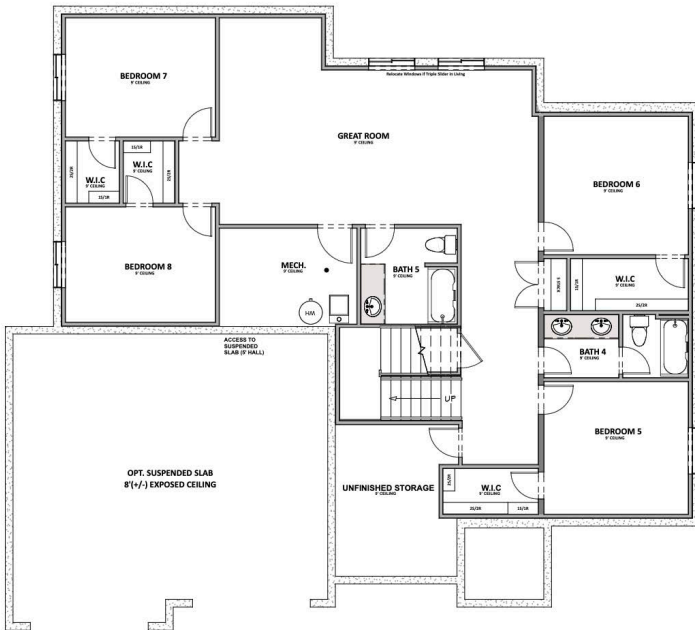


**HILLWOOD
HOMES**

UPPER FLOOR
Approx 1,272 SQ. FT.



OPTIONAL FINISHED BASEMENT
Approx 1,997 SQ. FT.



ADU BASEMENT LAYOUT

Hillwood Homes Sales | 385-275-3133

HillwoodHomes.com