The image is a dark-themed collage. The top left shows a building under construction with several yellow tower cranes. The bottom left features a group of about 20 construction workers in orange safety vests and hard hats, posing for a group photo. The right side of the image shows a large, dark building with the word 'CARPENTERS' in blue neon letters on its upper facade. An American flag is visible in front of the building. The background also includes other skyscrapers in a city skyline.

WHERE'S THE WORK?

READY-TO-WORK PHONE NUMBER



WESTERN STATES CARPENTERS READY-TO-WORK LIST (877) 252-7024

Attention Union carpenters:
Use this number to put yourself on the ready-to-work list, the daily dispatch list, and to roll call

If you are out of work put yourself on the ready-to-work list of your choice by calling the toll-free number any time.

If you are ready to go to work call **every weekday** between 7:00 a.m. and 2:00 p.m. to put yourself on the daily dispatch list. This gives you priority during dispatching.

To retain your position on the ready-to-work list you must **roll-call every week**. You can do that using the 877 number between 7:00 a.m. Friday & Monday at noon.

A confirmation number is given out every time you place yourself on a list. Please ensure that your phone number is current.



BURBANK BOB HOPE AIRPORT NEW TERMINAL

**3061 N HOLLYWOOD WAY
BURBANK CA 91505**

General Contractor: Pankow

NGI

- Looking for Local Hire
(Pasadena, Glendale, Burbank)



WISTERIA WARNER CENTER

**5500 CANOGA AVE.
WOODLAND HILLS CA 91367**

General Contractor: W E O'Neill

- Concrete

Jade

- Drywall

Martin-Raymond Joint Venture

- Metal Stud Framing & Drywall

Nevell-Standard Joint Venture

- Metal Stud Framing & Drywall



PEPPERDINE STUDENT CENTER

**24255 PACIFIC COAST HWY
MALIBU, CA 90263**

Raymond-Southern California Inc

Looking to hire 20 in the next couple of weeks.

To apply Scan the QR Code
and create an account.



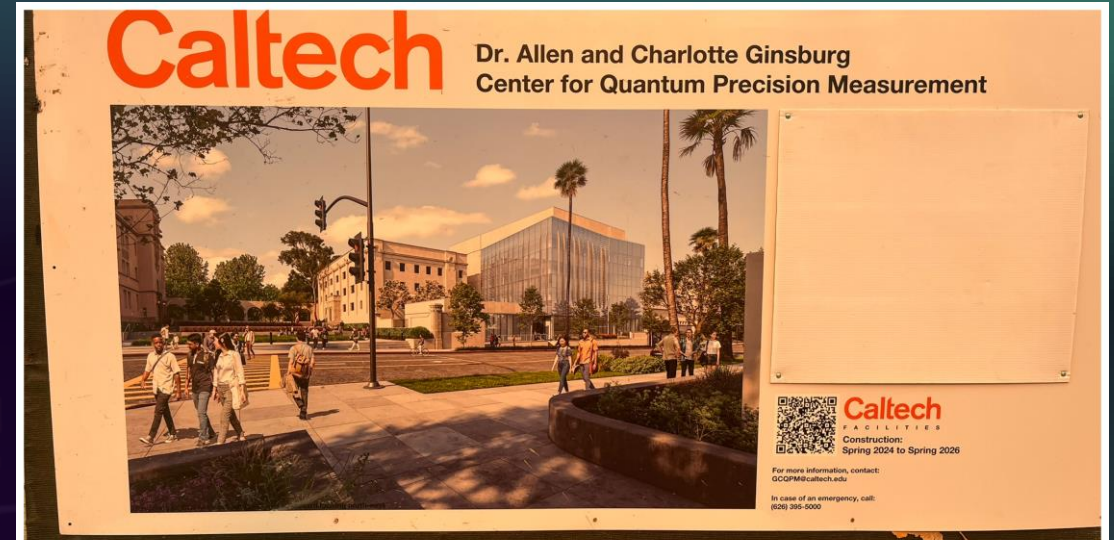
CALTECH CQPM

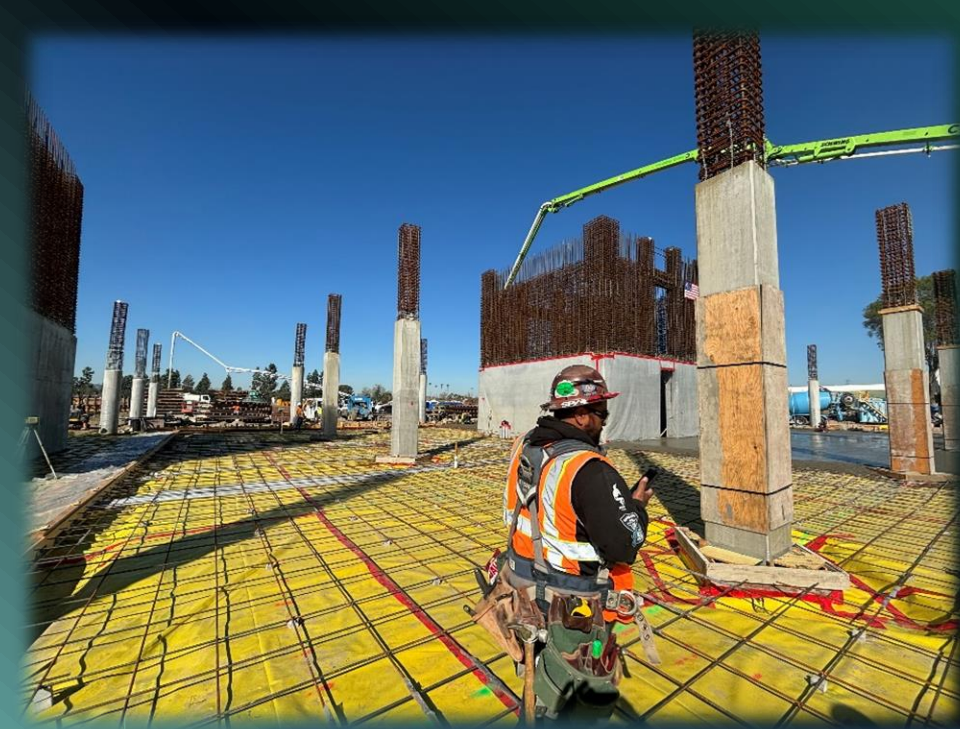
**1201 EAST CALIFORNIA BLVD
PASADENA, CA 91125**

General Contractor:

Charles Pankow Builders

- Concrete





THE RANCH –WARNER BROS STUDIOS

411 NORTH HOLLYWOOD WAY
BURBANK CA 91505

Anning – Johnson

Contact: Don Jenks

626-552-6711

TEXT ONLY



ECHELON STUDIOS

**5601 SANTA MONICA BLVD.
LOS ANGELES, CA 90038**

Morley Construction

- Structural Concrete

C Mat

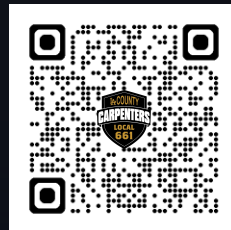
- Structural Concrete

Calex Engineering

- Pile Driving

Raymond SoCal

- Metal Stud Framing & Drywall





JMB CENTURY CITY CENTER

**1950 AVENUE OF THE STARS
LOS ANGELES, CA 90067**

GC: CLARK

Nevell

- Metal Stud

Parking address:

2030 Century Park

West Los Angeles, CA 90067

Start Time: 5:50am

1st Break: 9:00am

Lunch: 11:00am

2nd Break: 1:00pm

**LAUSD WOODROW
WILSON SENIOR HS**

**4500 MULTNOMAH ST
LOS ANGELES, CA 90032**

Inifinity Drywall – Local Hire

Looking to hire 5 Jouneyman & 3
Apprentices

Must fill out paperwork, pass Drug
Test & E-verity before starting.

Job starting Monday, March 24, 2025

LOCAL RESIDENT ZIP CODES

90001 90002 90003 90004 90005 90006 90007 90008 90010 90011 90012 90013 90014 90015 90016 90017
90018 90019 90020 90021 90022 90023 90024 90025 90026 90027 90028 90029 90031 90032 90033 90034
90035 90036 90037 90038 90039 90040 90041 90042 90043 90044 90045 90046 90047 90048 90049 90056
90057 90058 90059 90061 90062 90063 90064 90065 90066 90067 90068 90069 90071 90073 90077 90089
90094 90095 90201 90210 90220 90221 90230 90232 90247 90248 90249 90250 90255 90262 90265 90270
90272 90275 90280 90290 90291 90292 90293 90303 90402 90405 90501 90502 90505 90710 90717 90731
90732 90744 90745 90746 90802 90805 90810 91040 91042 91205 91214 91302 91303 91304 91306 91307
91311 91316 91321 91324 91325 91326 91330 91331 91335 91340 91342 91343 91344 91345 91352 91356
91364 91367 91387 91401 91402 91403 91405 91406 91411 91423 91436 91504 91505 91601 91602 91604
91605 91606 91607 91608 91754

