





WAYS TO FIND WORK

1. Obtain the most recent job list (Available at the Local or through the local's flowcode)
2. Solicit work by visiting the Job sites. Always ask to speak to the Foreman or Superintendent.
3. Contact a Representative to obtain possible job leads.
4. Networking with other Union Carpenters at Local Union and Committee Meetings. (Foreman, Journeymen, Apprentices)



Office Phone (818) 364-9303

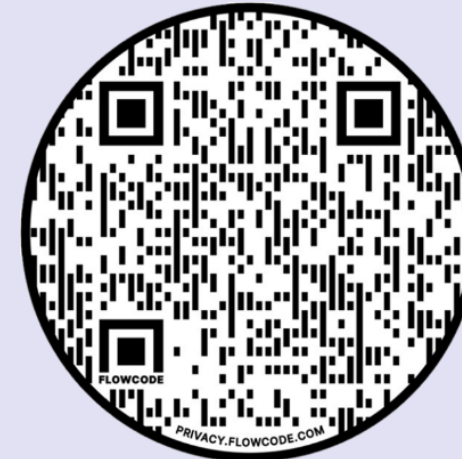
**WSRCC
OUT-OF-WORK LIST**

Use this number to put yourself
on the out-of-work list, the
daily dispatch list, and to roll
call:

(800) 338-4599

STAY CONNECTED

Scan the flowcode for information pertaining Local
661

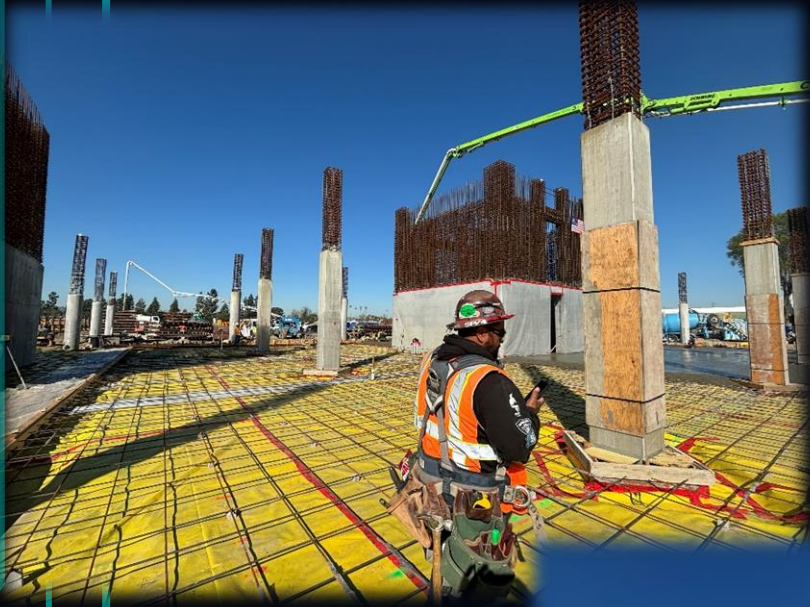


***WHERE
IS THE
WORK?***



THE RANCH - WARNER BROS STUDIOS

411 NORTH HOLLYWOOD WAY
BURBANK CA 91505



CONTRACTORS ON SITE:

Conco – Concrete

Hallin & Herrera –Tilt-Up

Bomel - Concrete





CSUN – AUTO DESK ENGAGEMENT CENTER

**18111 Nordhoff st.
Los angeles ca 91330**

Martin Brothers/ Marcowall Inc

- Metal Stud Framing

Cedars Sinai Marina Del Rey Hospital

4650 Lincoln Blvd.
Marina del rey 90292

PERFORMANCE CONTRACTING INC

► Drywall





Residency at the Empire 1

**2814 Empire Avenue,
Burbank ca 91504**

JADE

- Drywall (Will begin in 1 month)

Standard Framing

- Wood Framing

Bomel

- Parking

Conco

- Concrete

Wisteria Warner Center

5500 Canoga Ave. Woodland Hills ca 91367



GENERAL CONTRACTOR: LARGO

● CONCRETE

