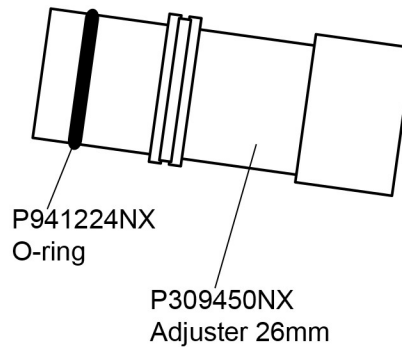
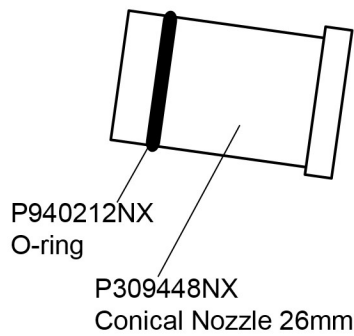
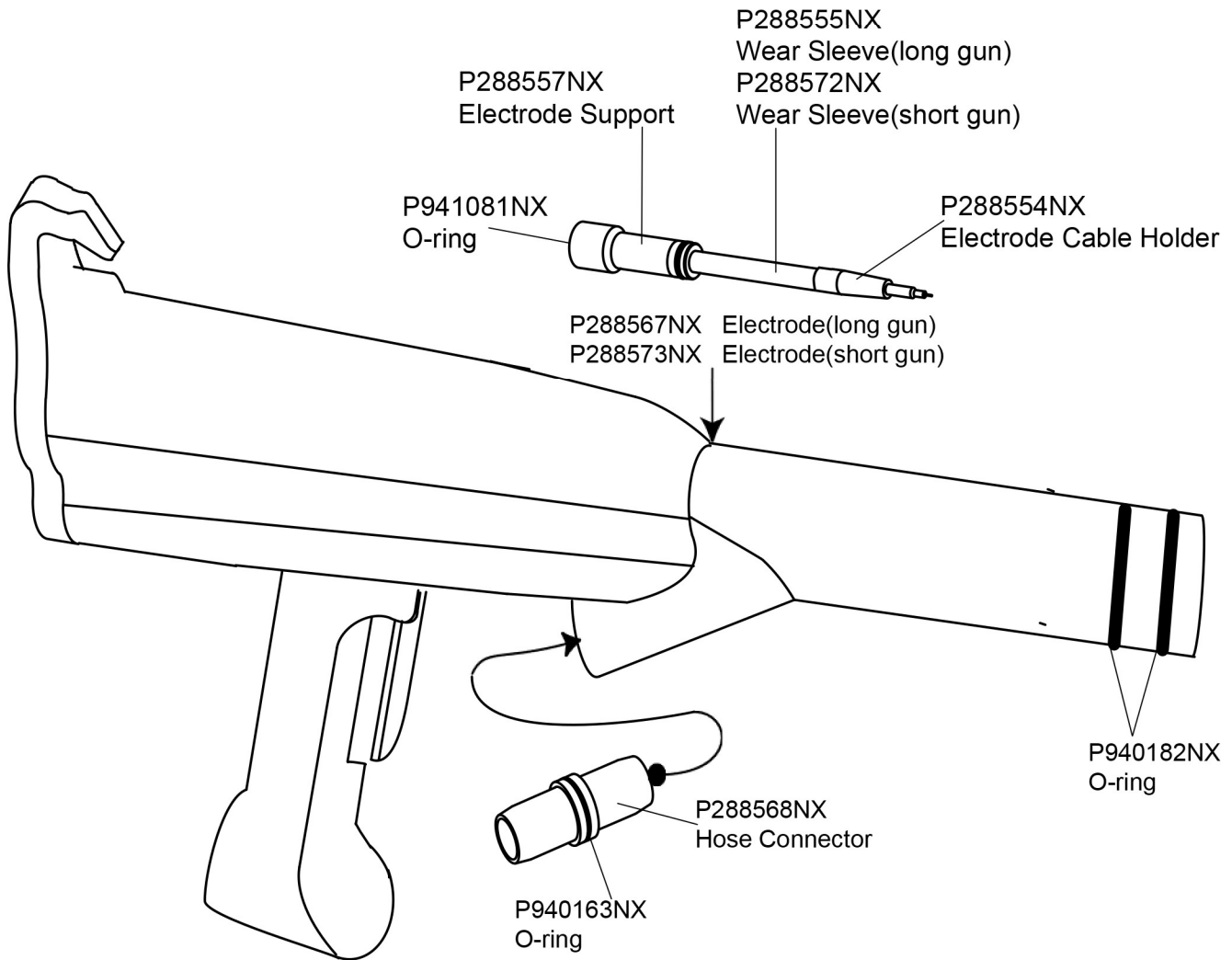


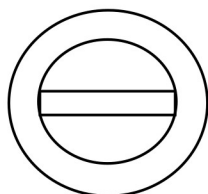
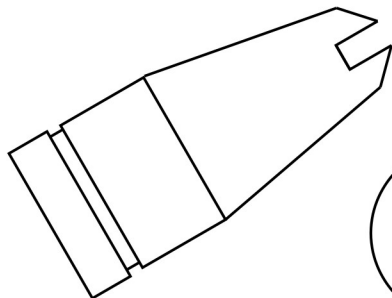
POWDER PARTS, inc.

Sure Coat Manual Gun

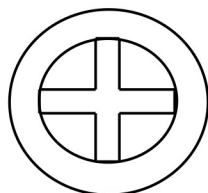


All parts are manufactured by or for Powder Parts, Inc., as "after market" replacement parts for powder coating equipment. The trademark names are owned by their respective companies and are used only for customer convenience.

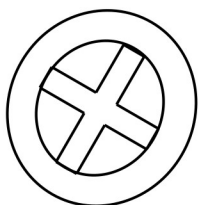
Sure Coat Nozzles



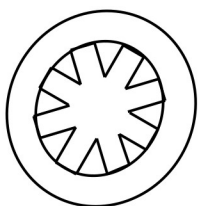
P302101NX	Flat spray nozzle 2.5mm (tivar)
P302108NX	Flat spray nozzle 2.5mm (glass-filled teflon)
P302102NX	Flat spray nozzle 3mm (tivar)
P302109NX	Flat spray nozzle 3mm (glass-filled teflon)
P302103NX	Flat spray nozzle 4mm
P302110NX	Flat spray nozzle 4mm (glass-filled teflon)
P302104NX	Flat spray nozzle 6mm (tivar)
P302111NX	Flat spray nozzle 6mm (glass-filled teflon)



P302106NX	Cross cut nozzle 90 degree (tivar)
-----------	------------------------------------



P302105NX	Cross cut nozzle 60 degree (tivar)
-----------	------------------------------------

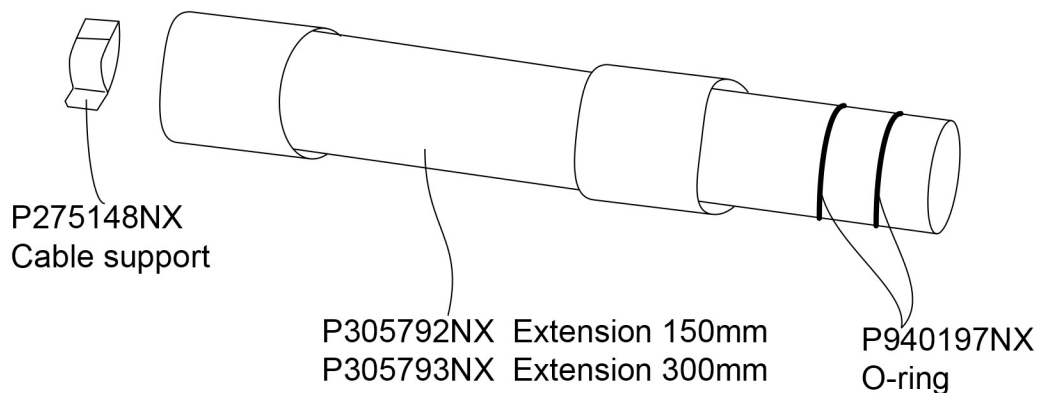
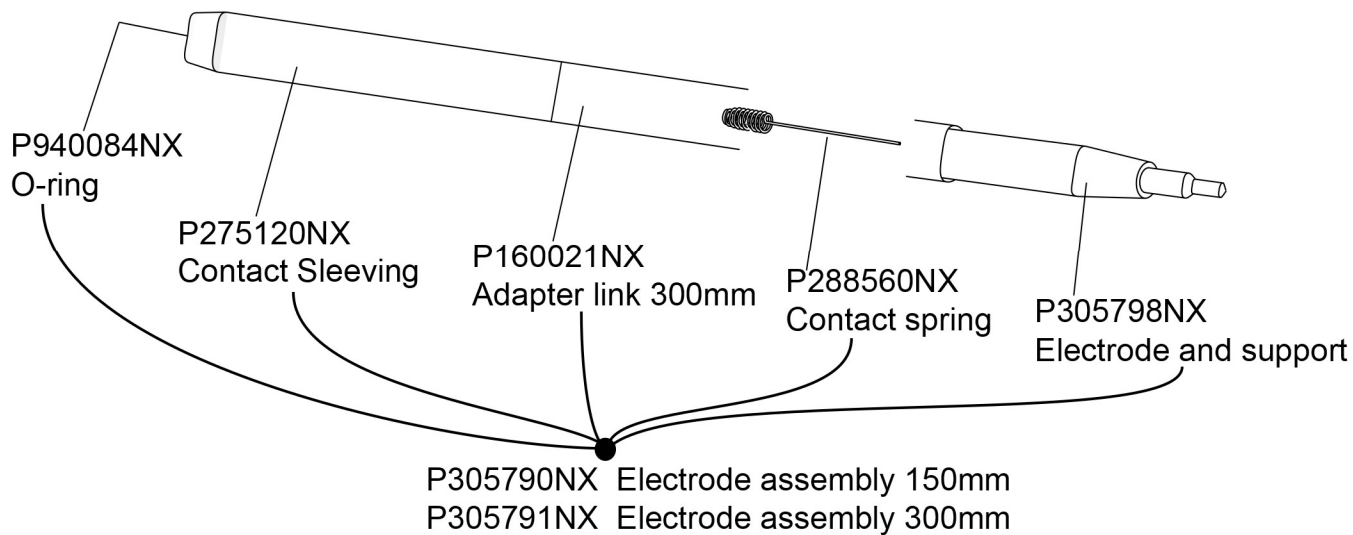


P302107NX	Castle nozzle
-----------	---------------

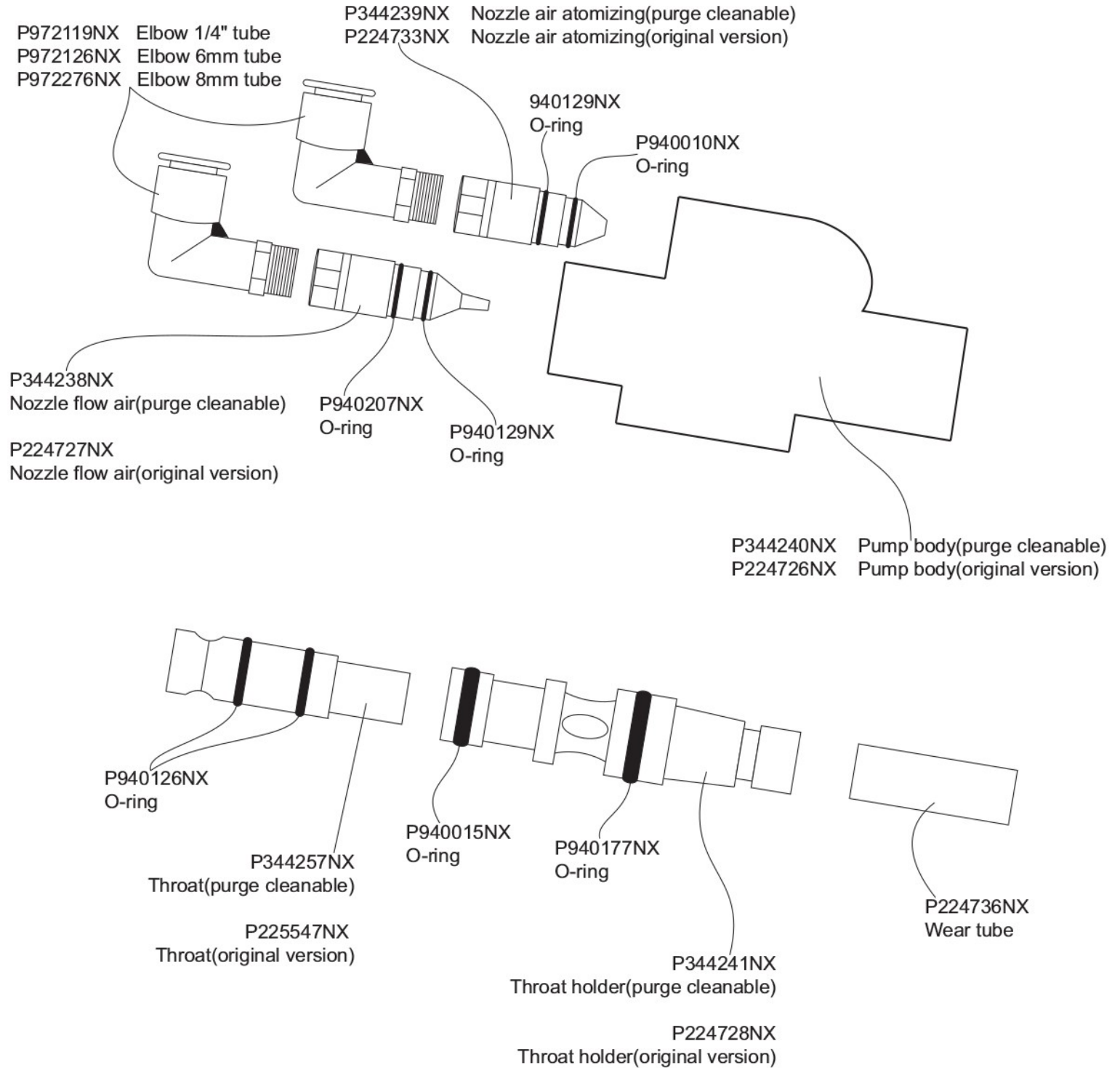


P135865NX	Deflector 14mm
P147880NX	Deflector 16mm
P173138NX	Deflector 19mm
P173141NX	Deflector 26mm
P249233NX	Deflector 38mm

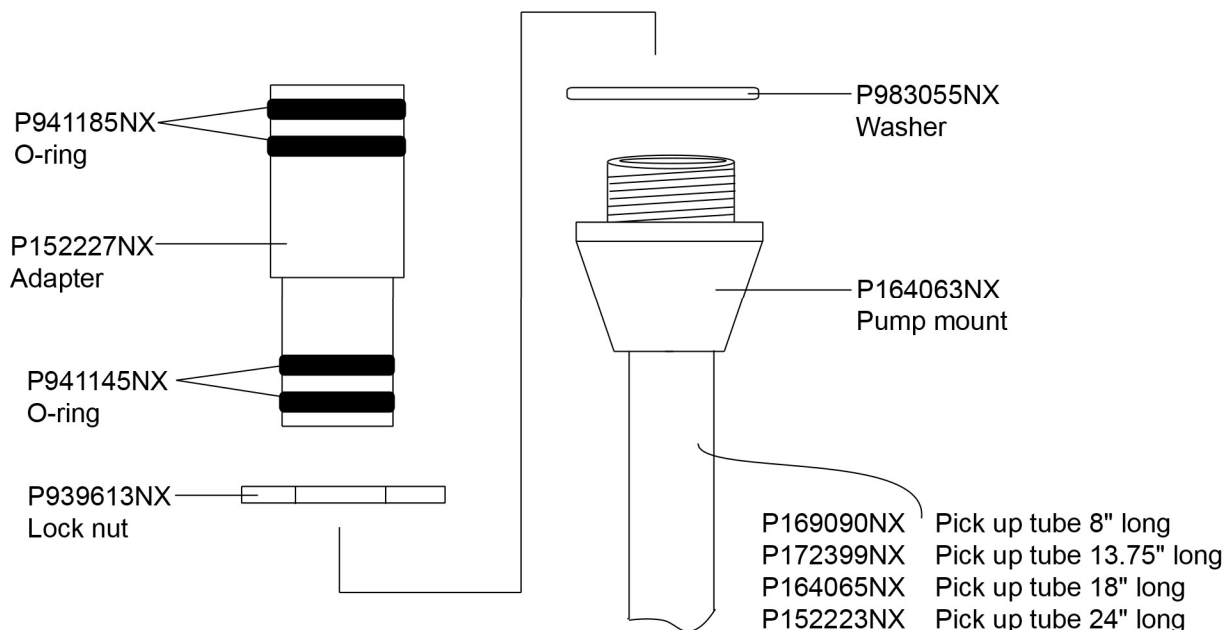
Sure Coat Lance Extension



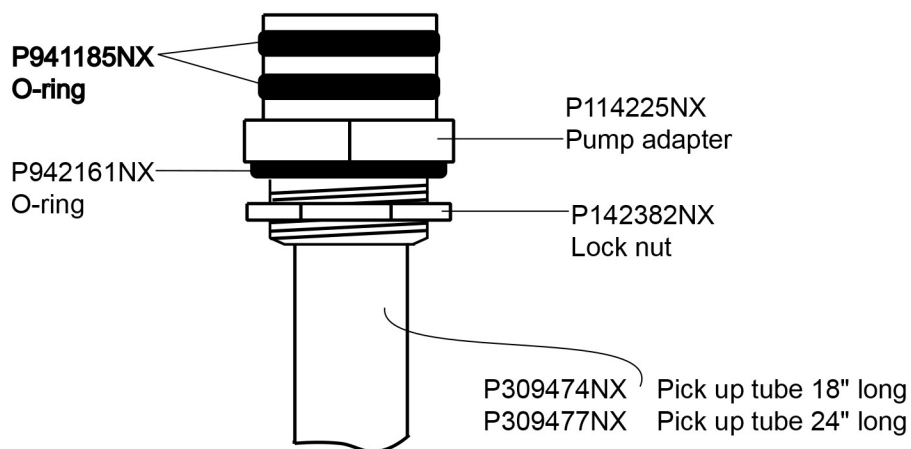
Corona Modular Pump/Purge Cleanable & Original Version



Pump adapter and pick-up tube, pull through the lid

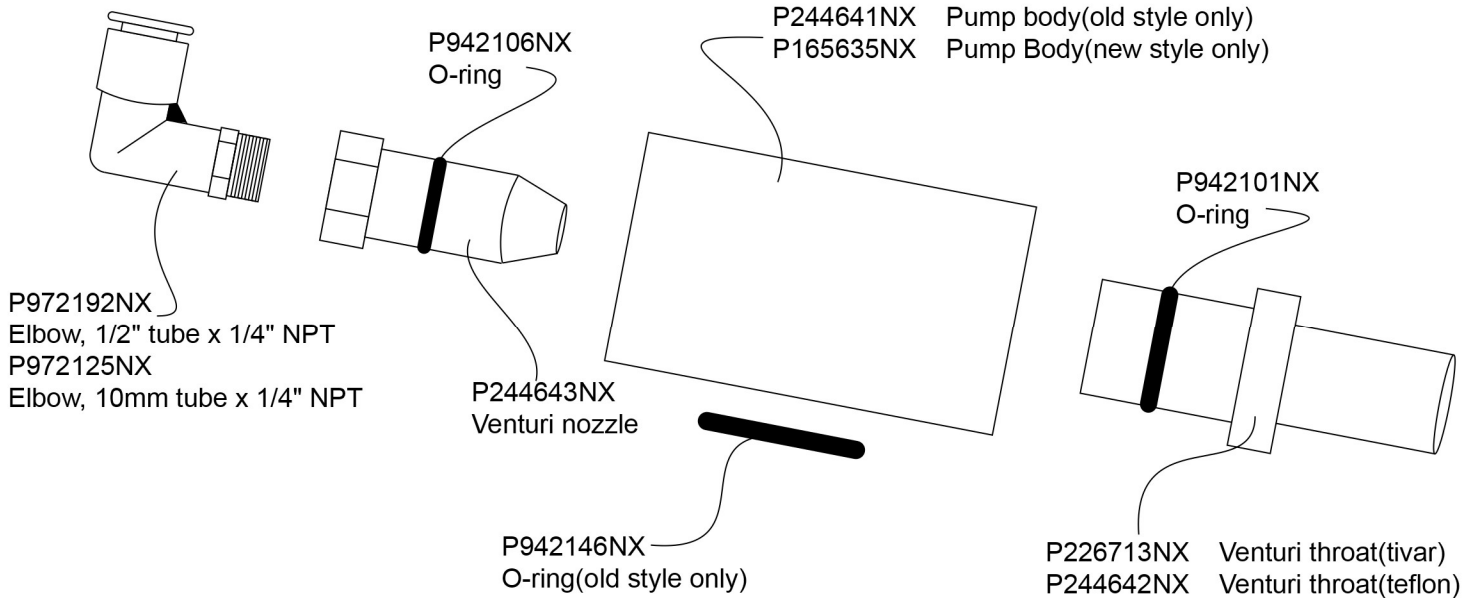


Pump adapter and pick-up tube, fixed mount

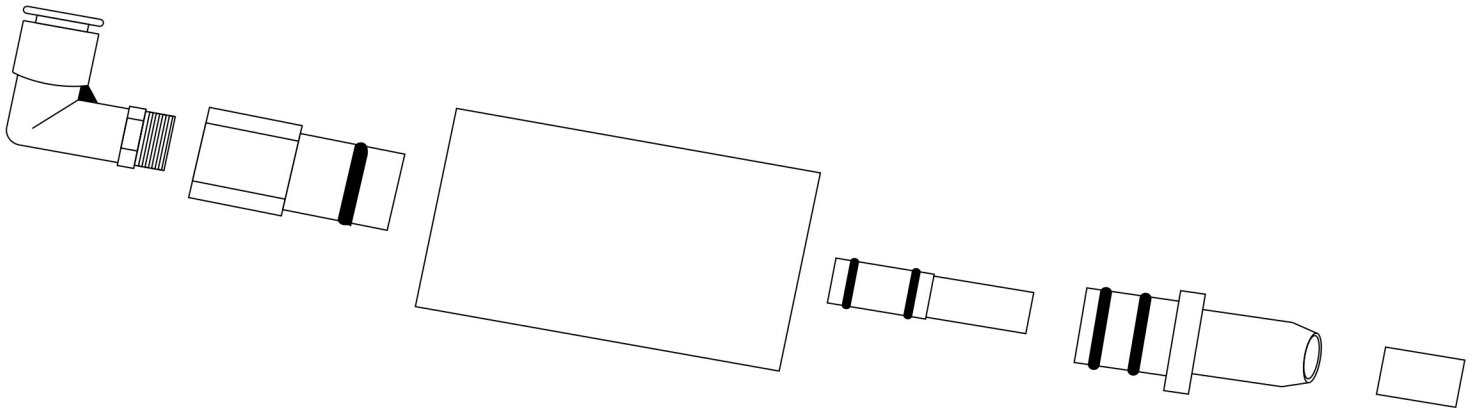




Powder Transfer Pump, Old and New Style



Metric Powder Transfer Pump with Metal Throat Holder

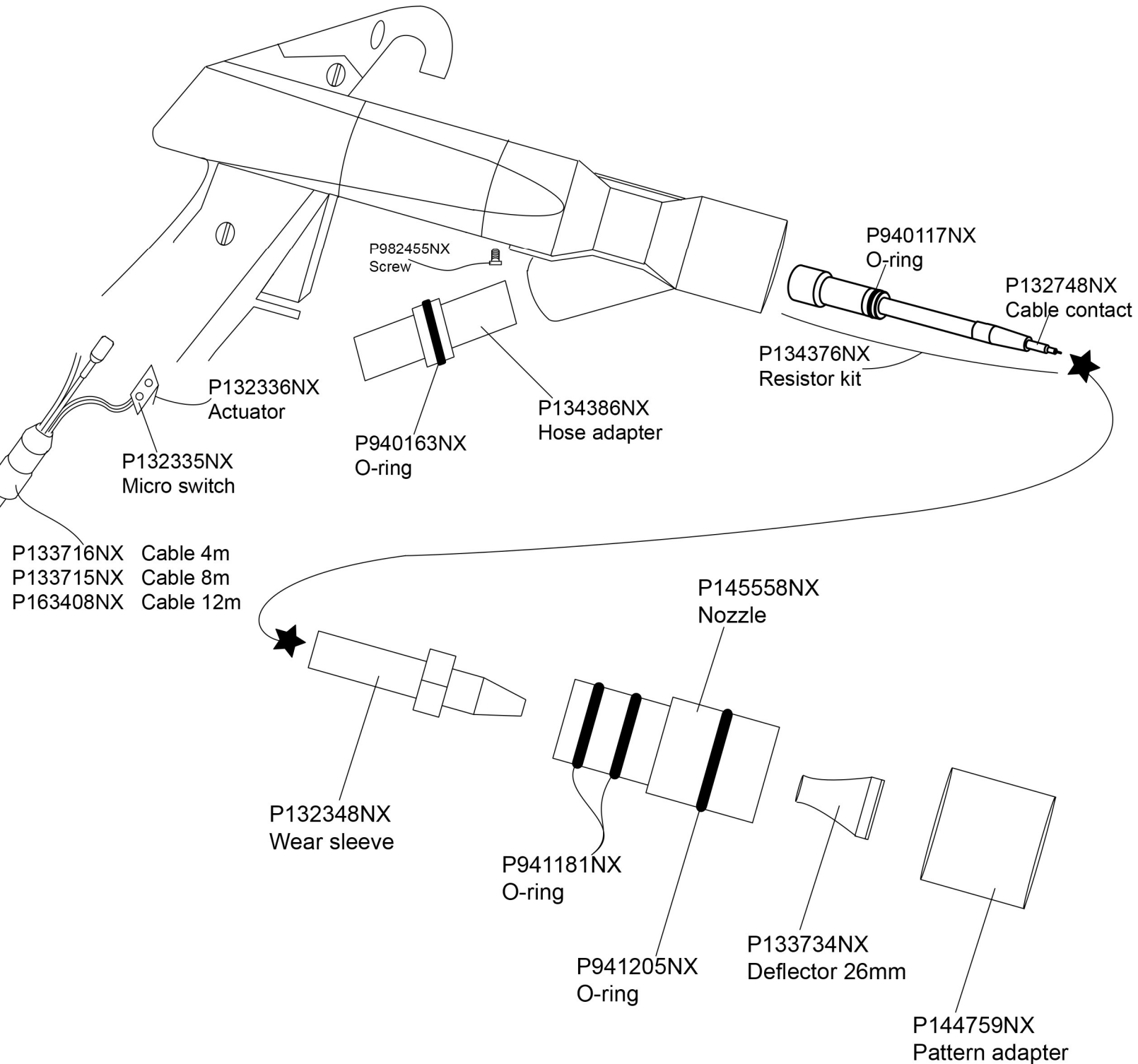


P972192NX
 Elbow, 1/2" tube x 1/4" NPT
 P972125NX
 Elbow, 10mm tube x 1/4" NPT

All parts are manufactured by or for Powder Parts, Inc., as "after market" replacement parts for powder coating equipment. The trademark names are owned by their respective companies and are used only for customer convenience.

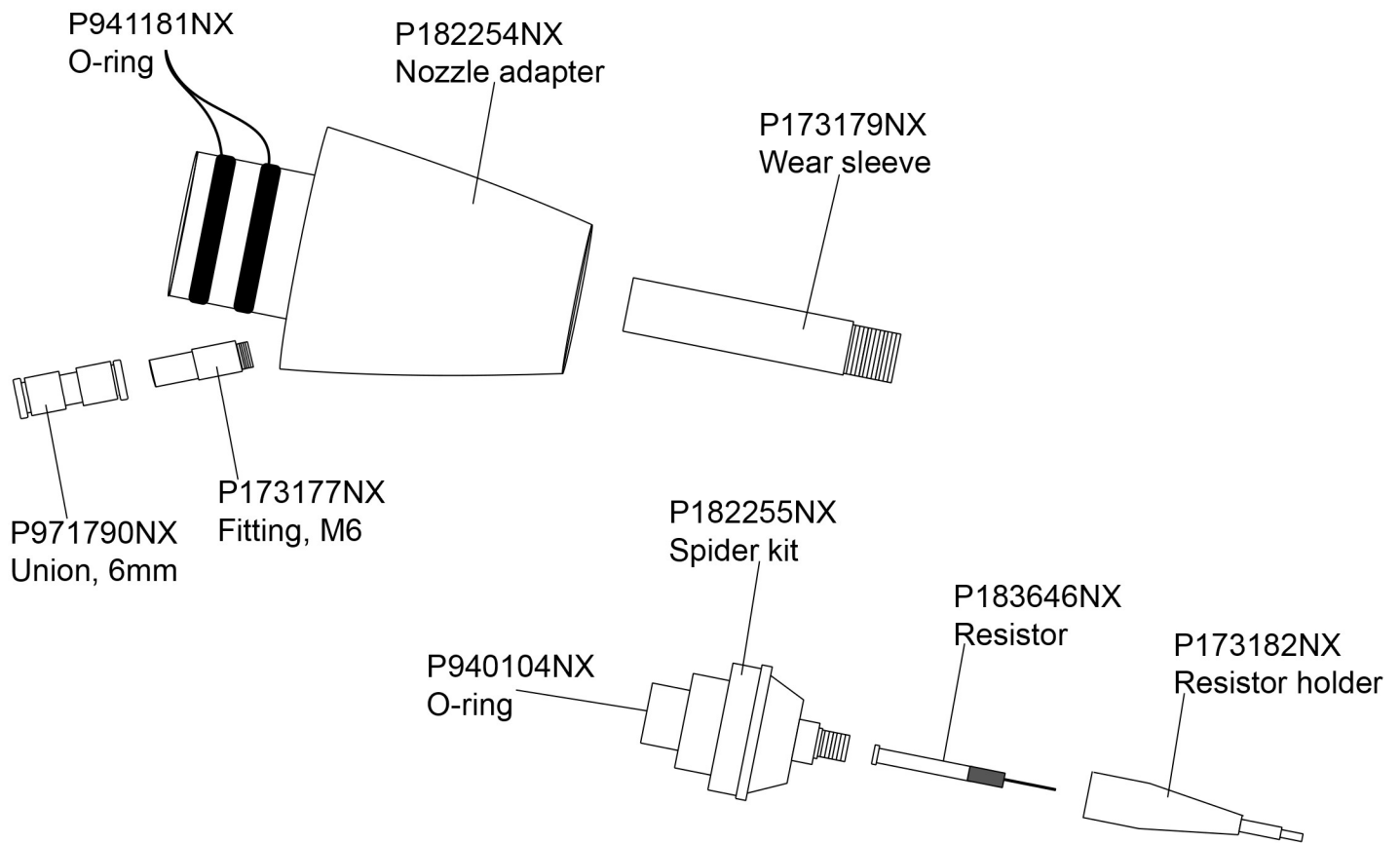
POWDER PARTS, inc.

Versa Spray IPS Manual Gun

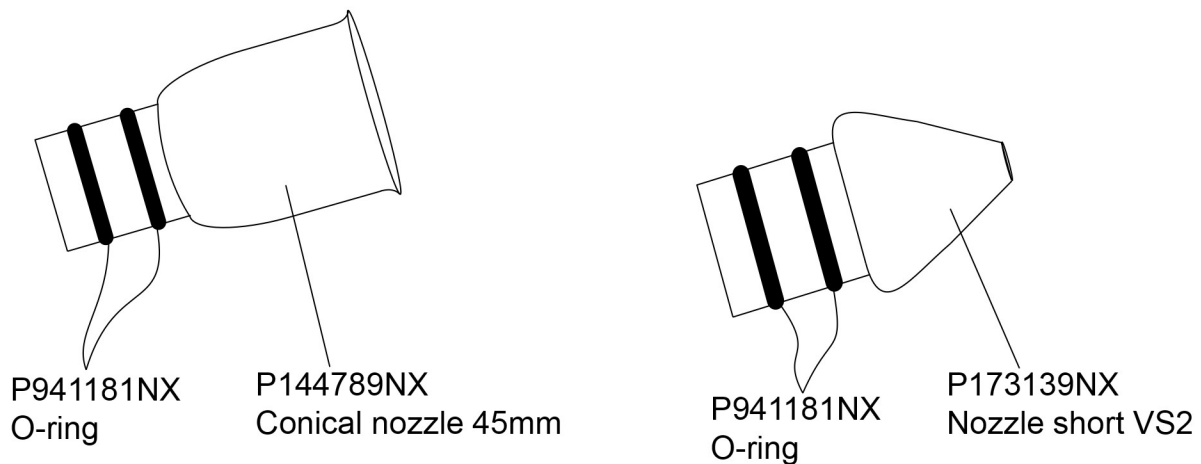


All parts are manufactured by or for Powder Parts, Inc., as "after market" replacement parts for powder coating equipment. The trademark names are owned by their respective companies and are used only for customer convenience.

Versa Spray Air Wash Extension Kit

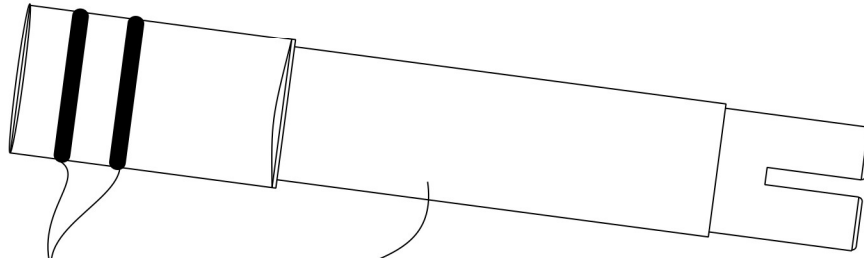


Versa Spray Conical Nozzles



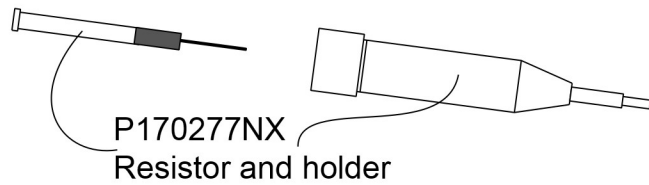
Versa Spray Lightweight Lance Extension

P233469NX Extension complete 150mm
 P233468NX Extension complete 300mm
 P233455NX Extension complete 450mm

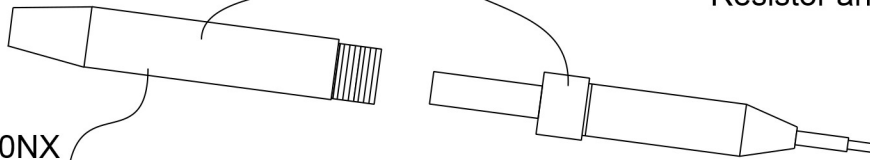


P941181NX O-ring
 P233467NX Extension tube 150mm
 P233466NX Extension tube 300mm
 P233454NX Extension tube 450mm

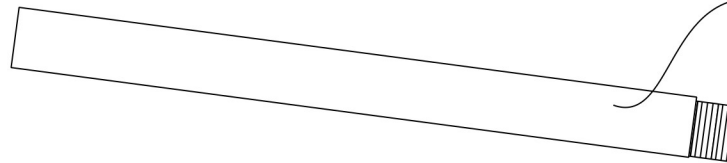
P160066NX Lance electrode 150mm
 P160068NX Lance electrode 300mm
 P233451NX Electrode assembly



P170277NX Resistor and holder



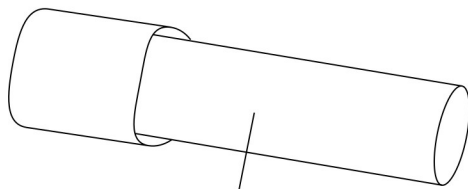
P160020NX Contact sleeving



P160021NX Adapter link

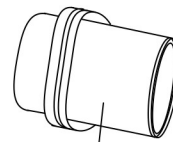
P233462NX Cable well support

P940203NX O-ring



P233461NX Nozzle adapter

P941193NX O-ring



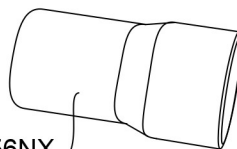
P233459NX Pattern adjuster

P173138NX Deflector 19mm



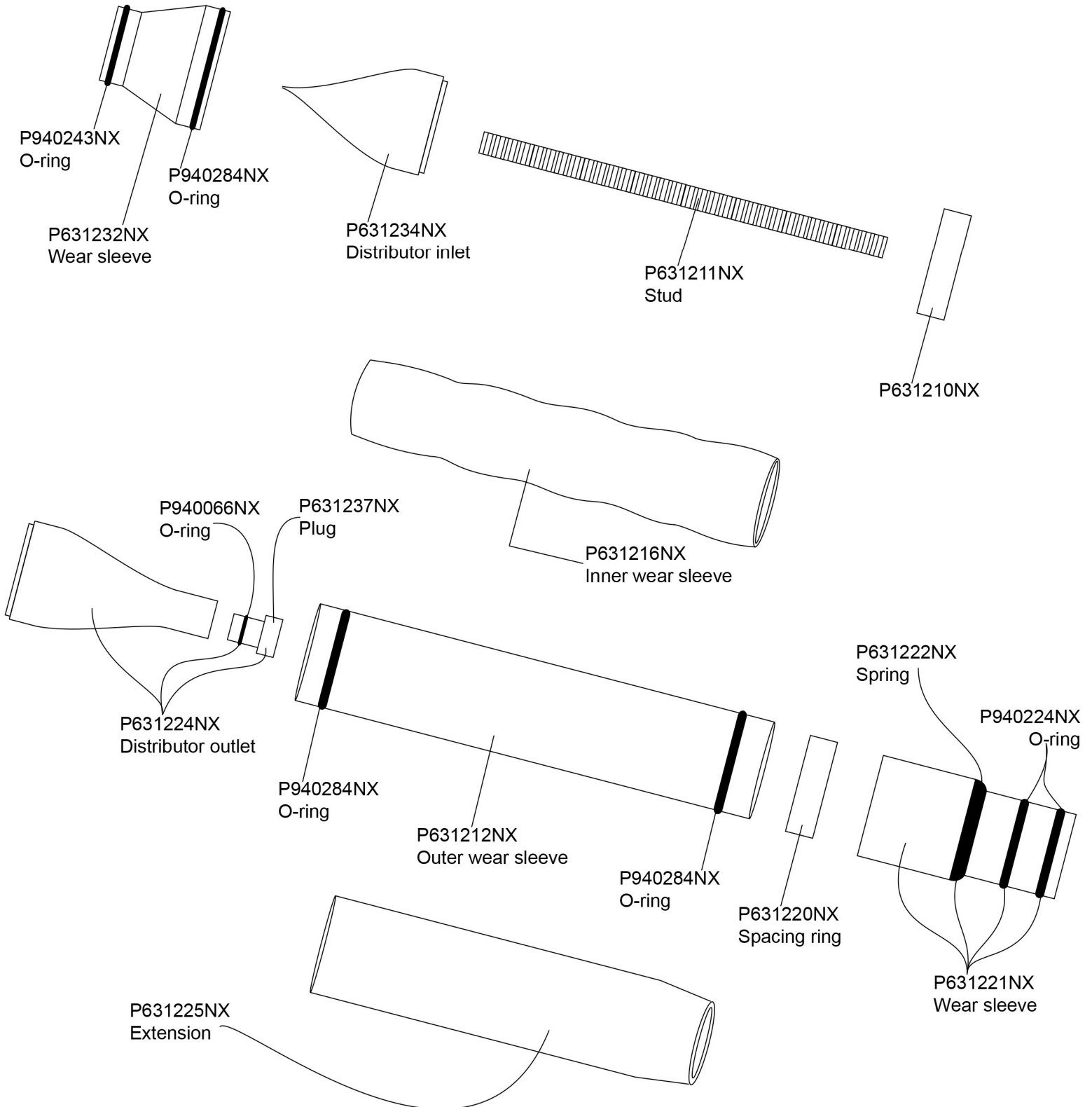
P940084 O-ring

P233456NX Nozzle adapter



POWDER PARTS, inc.

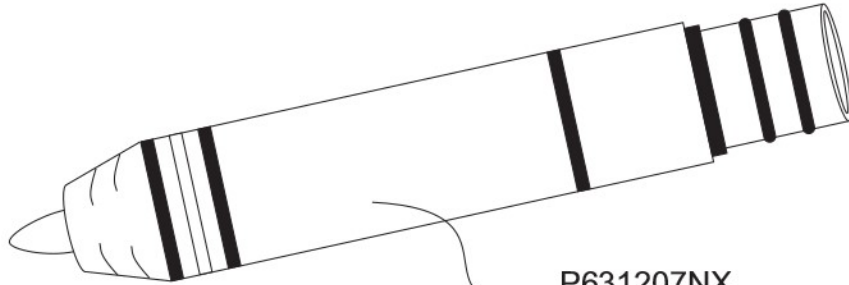
Tribomatic II Charge Module Teflon



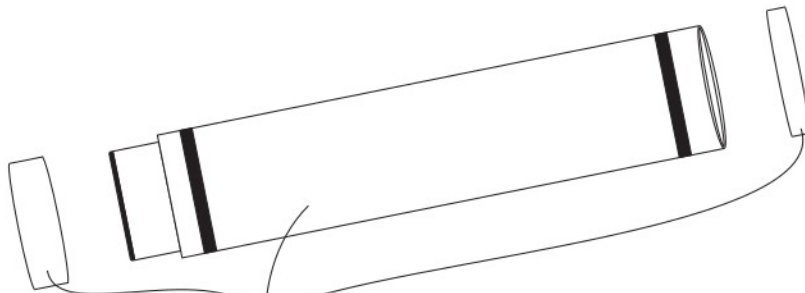
All parts are manufactured by or for Powder Parts, Inc., as "after market" replacement parts for powder coating equipment. The trademark names are owned by their respective companies and are used only for customer convenience.

POWDER PARTS, inc.

Tribomatic II Service Kits



P631207NX
Service kit charge module

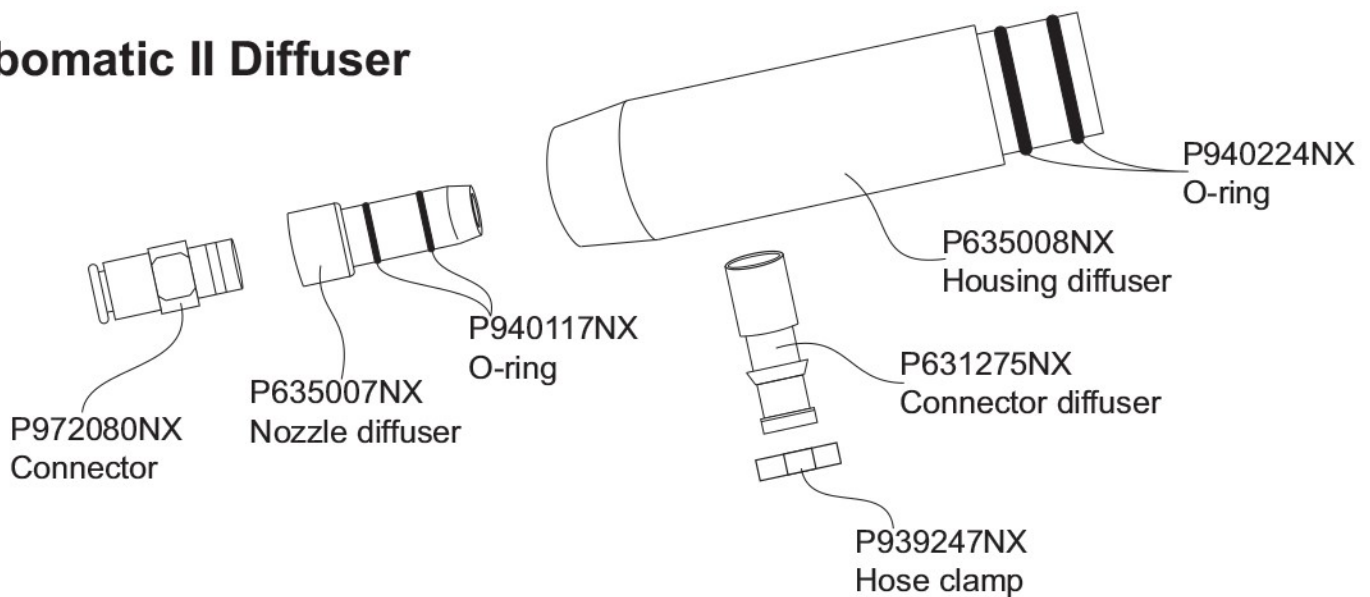


P631208NX
Service kit inner/outer wear sleeves



P631209NX
Service kit rings

Tribomatic II Diffuser



P972080NX
Connector

P635007NX
Nozzle diffuser

P940117NX
O-ring

P635008NX
Housing diffuser

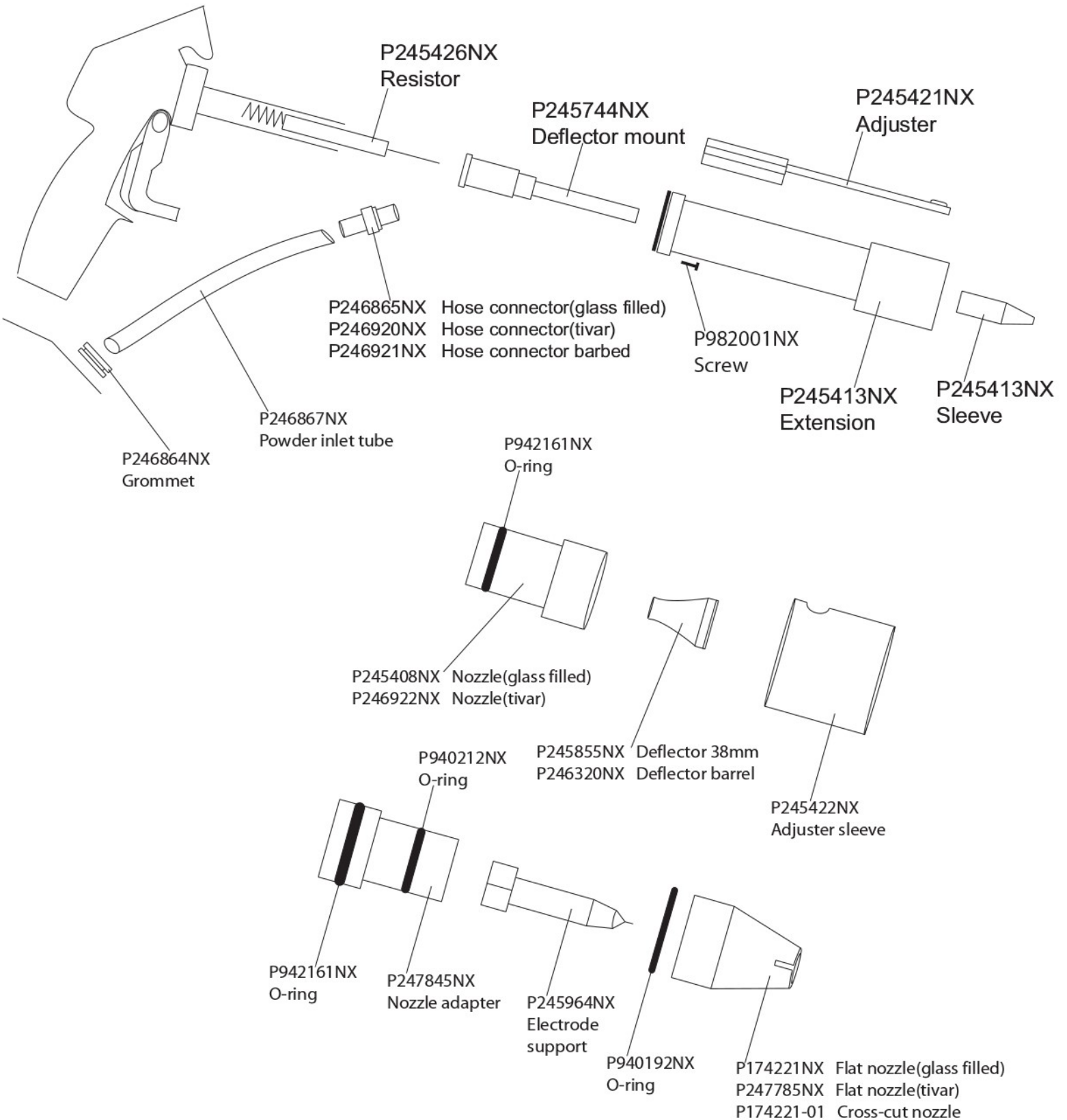
P940224NX
O-ring

P631275NX
Connector diffuser

P939247NX
Hose clamp

POWDER PARTS, inc.

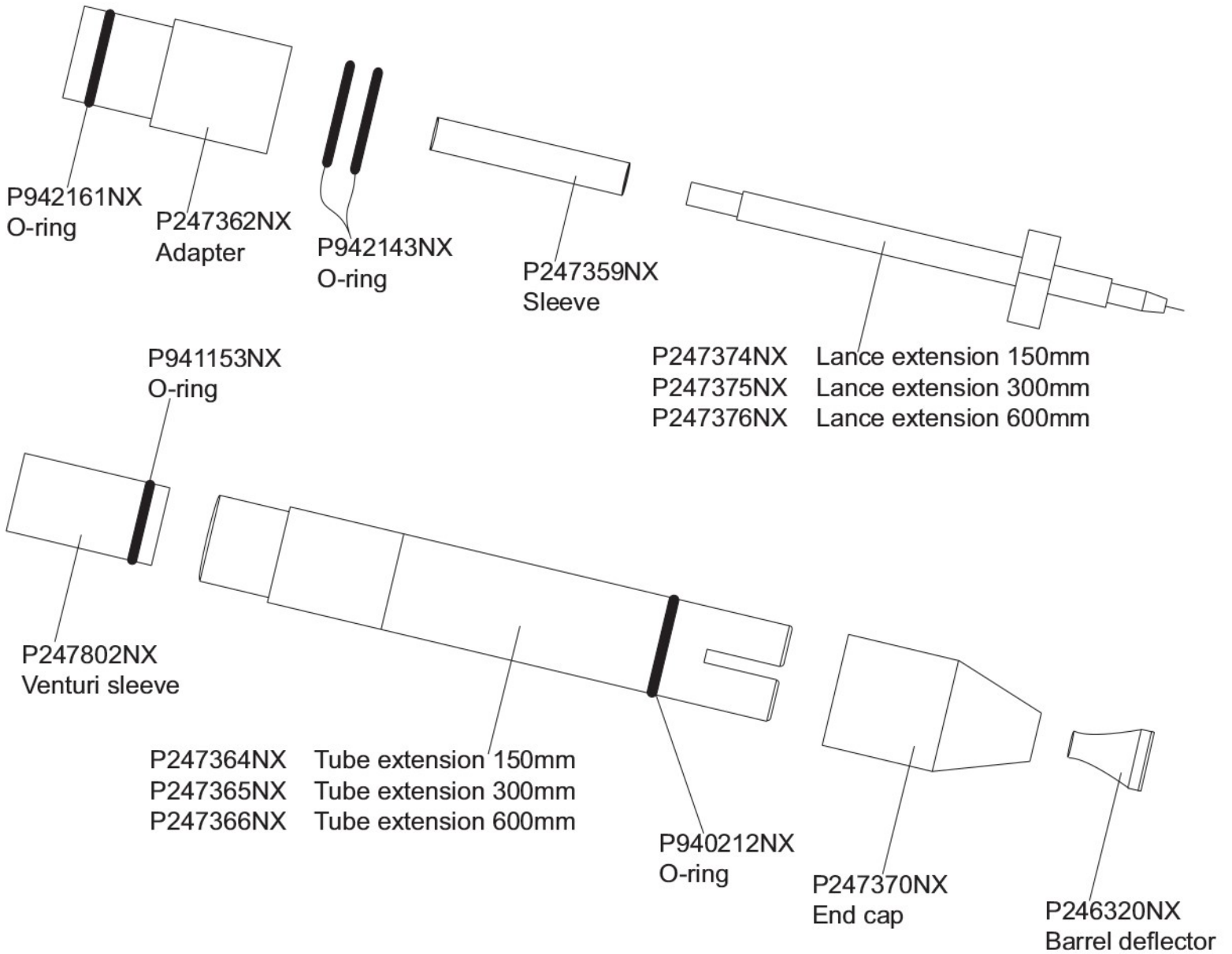
Model 2M Manual Gun



All parts are manufactured by or for Powder Parts, Inc., as "after market" replacement parts for powder coating equipment. The trademark names are owned by their respective companies and are used only for customer convenience.

POWDER PARTS, inc.

100Plus Series II, 2A and 2M Guns Lance Extension

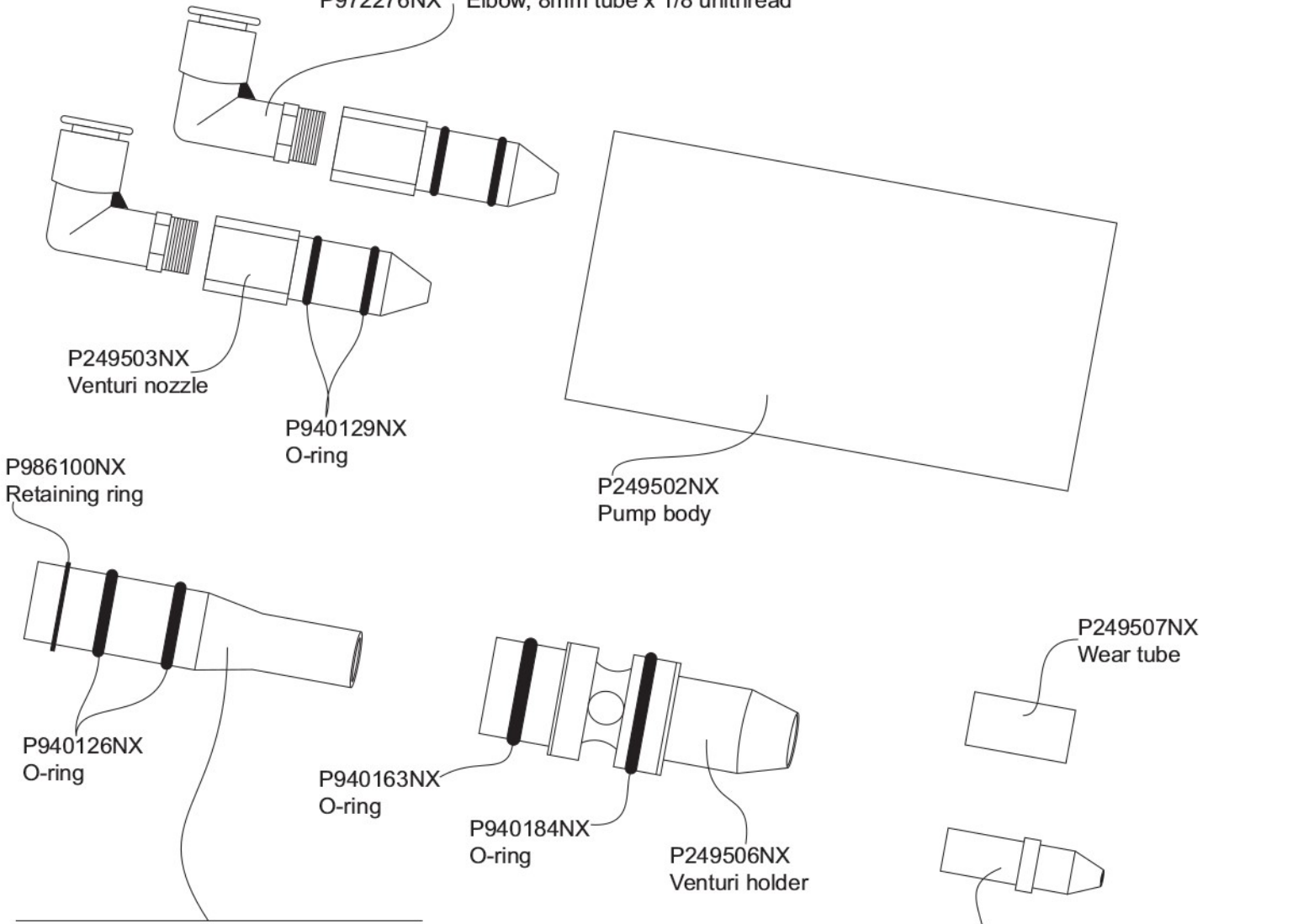


All parts are manufactured by or for Powder Parts, Inc., as "after market" replacement parts for powder coating equipment. The trademark names are owned by their respective companies and are used only for customer convenience.

100 Plus Powder Pump

P249500NX Powder pump complete, standard flow
 P142062NX Powder pump complete, low flow

P972119NX Elbow, 1/4 tube x 1/8 NPT
 P972126NX Elbow, 6mm tube x 1/8 unithread
 P972276NX Elbow, 8mm tube x 1/8 unithread



P114221NX Venturi, standard flow(tivar)
 P249504NX Venturi, standard flow(teflon)
 P174215NX Venturi, standard flow(glass-filled)
 P114223NX Venturi, standard flow(stainless-steel)
 P114219NX Venturi, low flow(tivar)
 P109101NX Venturi, low flow(teflon)
 P174213NX Venturi, low flow(glass-filled)

P139943NX
 Hose connector(low flow pump only)