



HILLWOOD
HOMES

SKYE MEADOWS

PASTURE PLAN



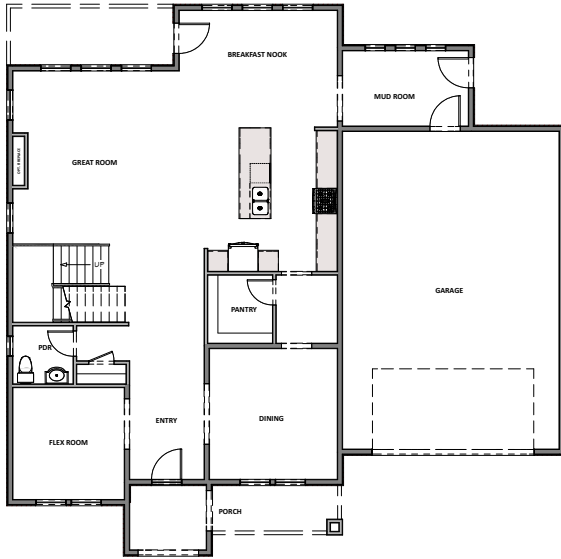
4 - 6 BEDROOMS | 3.5 - 4.5 BATHROOMS | 4 CAR GARAGE
3,632 FINISHED SQ. FT. | 5,234 TOTAL SQ. FT.

HOME FEATURES

- Open Kitchen and Living Room
- Kitchen Island
- Master Bedroom Walk-in Closet
- Quartz Countertops in Kitchen and Bathrooms
- Mud and Laundry Room off Garage
- 9' Ceilings on Main Floor and Basement
- 8' Doors on Main Floor
- Tile Flooring in Bathroom and Laundry
- Moen Gibson Chrome plumbing fixtures
- Stainless Steel Whirlpool Appliances
- Energy Saving Low-E Dual Glazed White Vinyl Windows
- Full Front Yard Landscaping with Automatic Sprinkler System

MAIN FLOOR

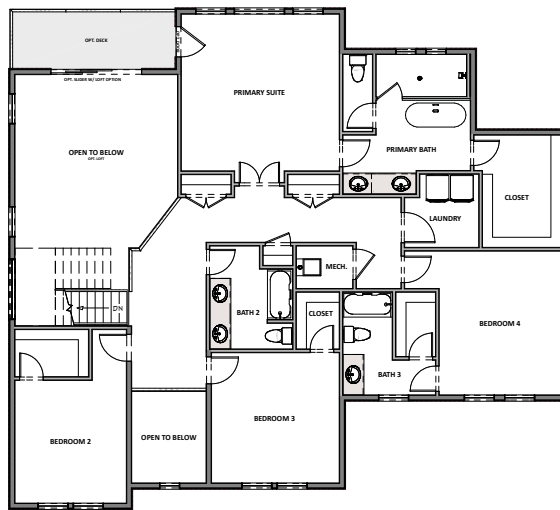
Approx 1,602 Sq. Ft.



HILLWOOD HOMES

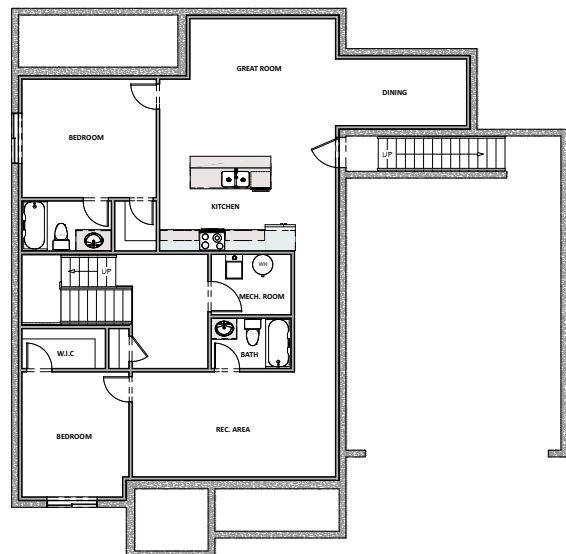
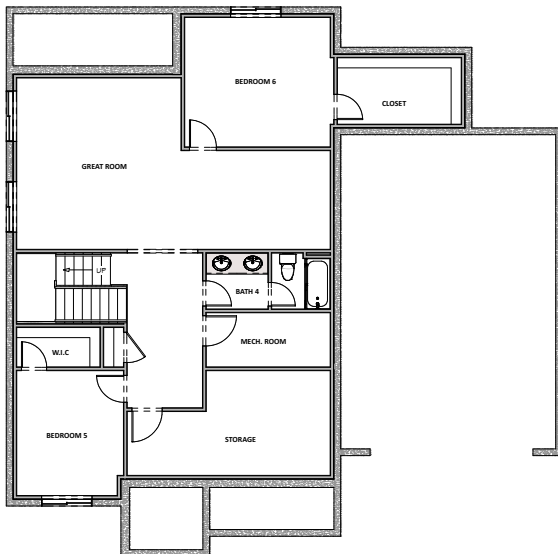
UPPER FLOOR

Approx 2,030 Sq. Ft.



OPTIONAL FINISHED BASEMENT

Approx 1,602 Sq. Ft.



ADU BASEMENT LAYOUT

Hillwood Homes Sales | 801.917.2837

HillwoodHomes.com