



# DUPONT POINTE

## - APARTMENT HOMES -

You just found it! Dupont Pointe Apartments are among the largest apartments in the area. Each apartment has a walk-in closet in the main bedroom along with overall generous closet space. Added to your comfort, you will find central air, individual heat control, and energy-efficient, argon-filled Low-E® glass windows for additional savings on your electric bill. Our newly renovated laundry rooms are equipped with front-loading, energy-saving machines. We take great pride in being attentive to the needs of our residents.

We are within walking distance of Walgreen's, Christiana Care Medical Doctors, the Odyssey and Wilmington Charter Schools, the Cab Calloway School for the Performing Arts & more! DART (Route 4) can pick you up right upfront to take you to the Prices Corner area, Adams Four Shopping Center, the Riverfront, and Downtown Wilmington without having to switch buses!

## APARTMENT FEATURES

- 1, 2 & 3 Bedroom Apartments
- Renovated Kitchens
- Large Walk-in Closets
- Central Air
- Individually Controlled Heat
- Cable Ready

## COMMUNITY AMENITIES

- Pet Friendly
- On-Site Laundry Center
- Convenient Off Street Parking
- On-Site Management
- 24/7 Emergency Maintenance Service
- On DART Bus Line -Route 4
- Red Clay School District
- Walk to Walgreens, Restaurants, Doctors, Cab Calloway School the Performing Arts, Wilmington Charter School, Odyssey Charter School & more!



EVERYTHING YOU WANT  
**EXACTLY WHAT  
YOU DESERVE.**



3403 Lancaster Pike Wilmington, DE 19805  
dupontpointe@aionmanagement.com | dupontpointe.com

**302-998-0088**

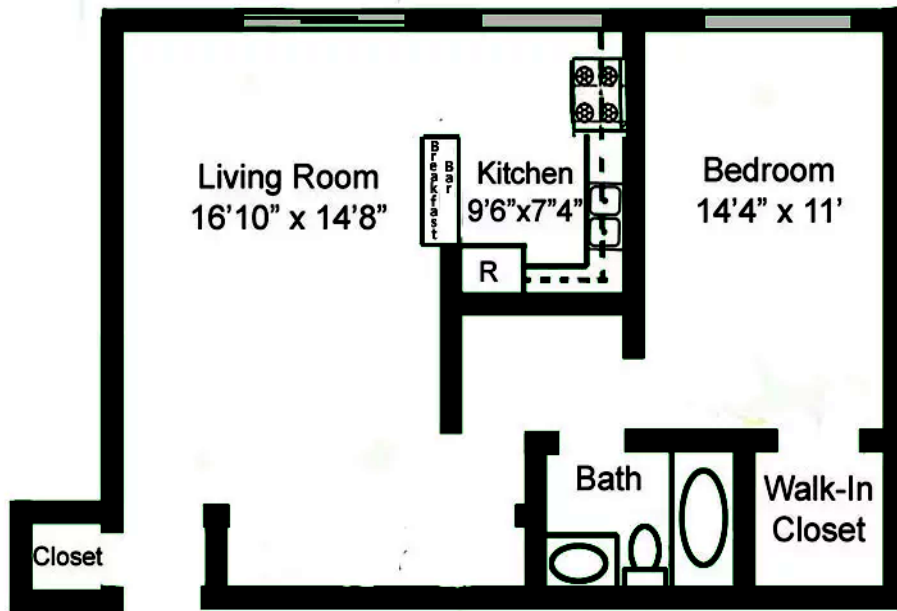
**AION**  
MANAGEMENT



\*Floor plans are artist's conception. Details and dimensions may differ from actual plans. Standard and optional features may vary. Management reserves the right to initiate changes without prior notice. See Community Manager for more information.

# DUPONT POINTE

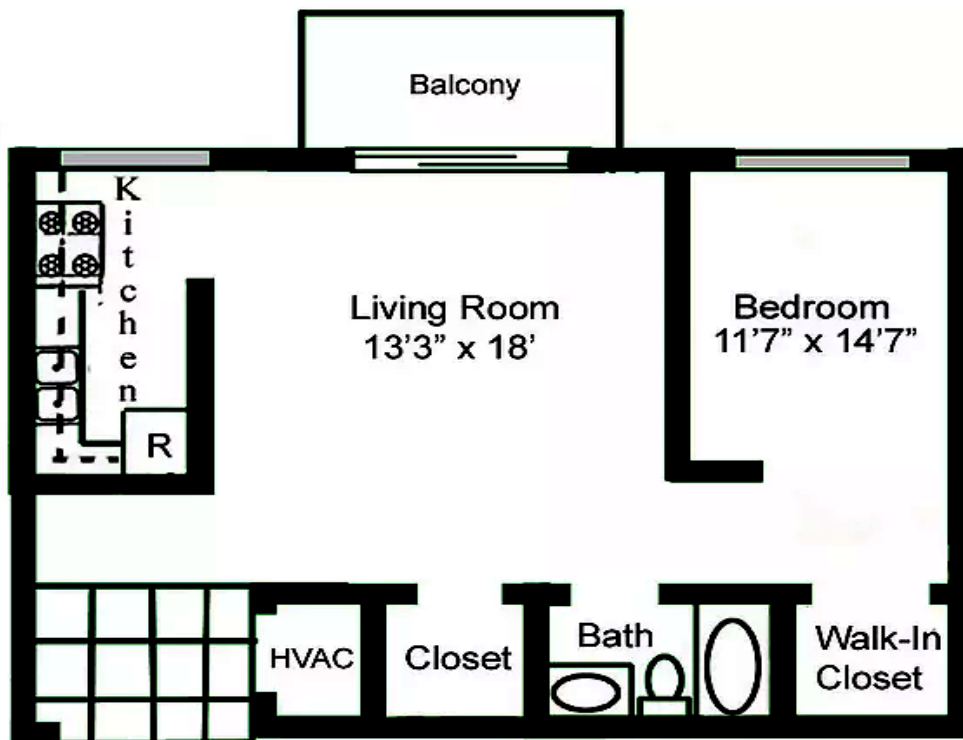
- APARTMENT HOMES -



**S1**  
1 Bedroom 1 Bath  
640 Sq. Ft.\*

\$ \_\_\_\_\_

Date Available \_\_\_\_\_



**A2**  
1 Bedroom 1 Bath  
640 Sq. Ft.\*

\$ \_\_\_\_\_

Date Available \_\_\_\_\_



3403 Lancaster Pike Wilmington, DE 19805  
dupontpointe@aionmanagement.com | dupontpointe.com

**302-998-0088**

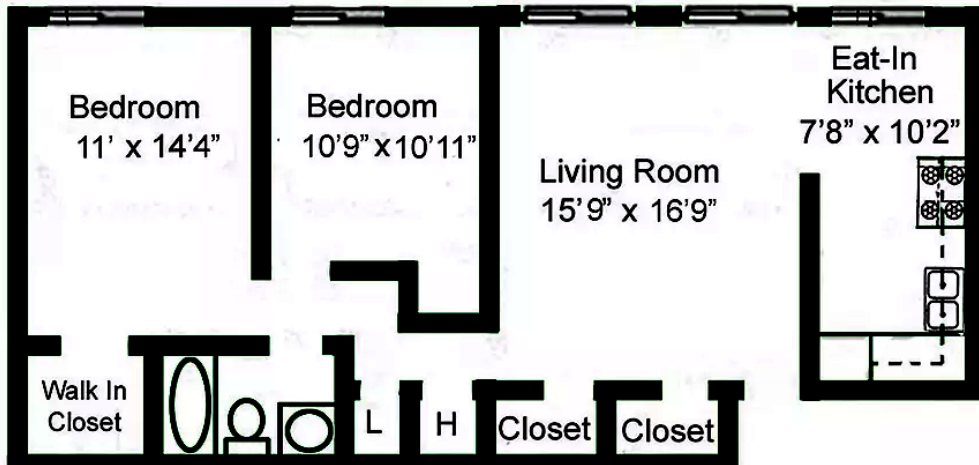
**AION**  
MANAGEMENT



\*Floor plans are artist's conception. Details and dimensions may differ from actual plans. Standard and optional features may vary. Management reserves the right to initiate changes without prior notice. See Community Manager for more information.

# DUPONT POINTE

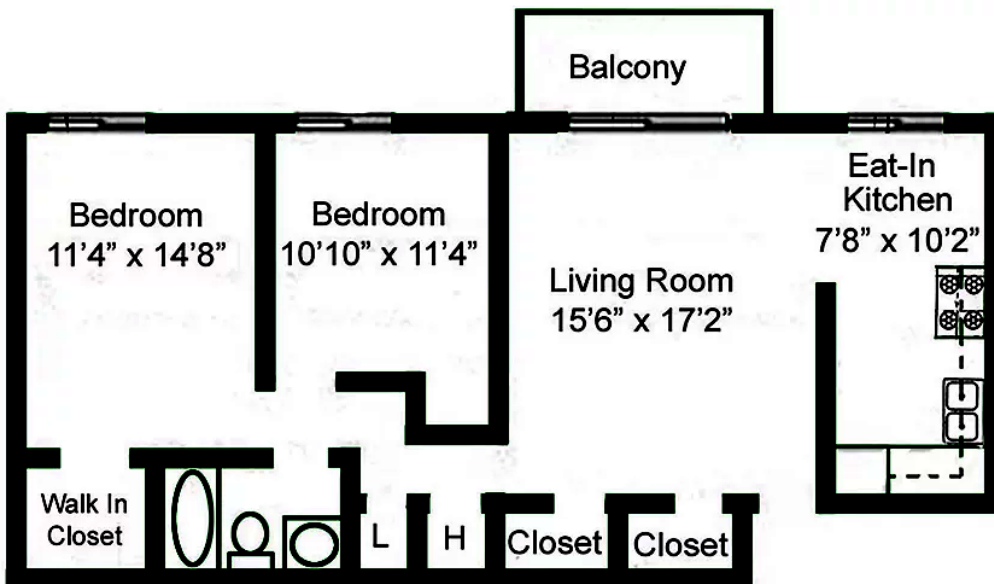
- APARTMENT HOMES -



**B1**  
2 Bedroom 1 Bath  
860 Sq. Ft.\*

\$ \_\_\_\_\_

Date Available \_\_\_\_\_



**B2**  
2 Bedroom 1 Bath  
860 Sq. Ft.\*

\$ \_\_\_\_\_

Date Available \_\_\_\_\_



3403 Lancaster Pike Wilmington, DE 19805  
dupontpointe@aionmanagement.com | dupontpointe.com

**302-998-0088**

**AION**  
MANAGEMENT



\*Floor plans are artist's conception. Details and dimensions may differ from actual plans. Standard and optional features may vary. Management reserves the right to initiate changes without prior notice. See Community Manager for more information.

# DUPONT POINTE

- APARTMENT HOMES -

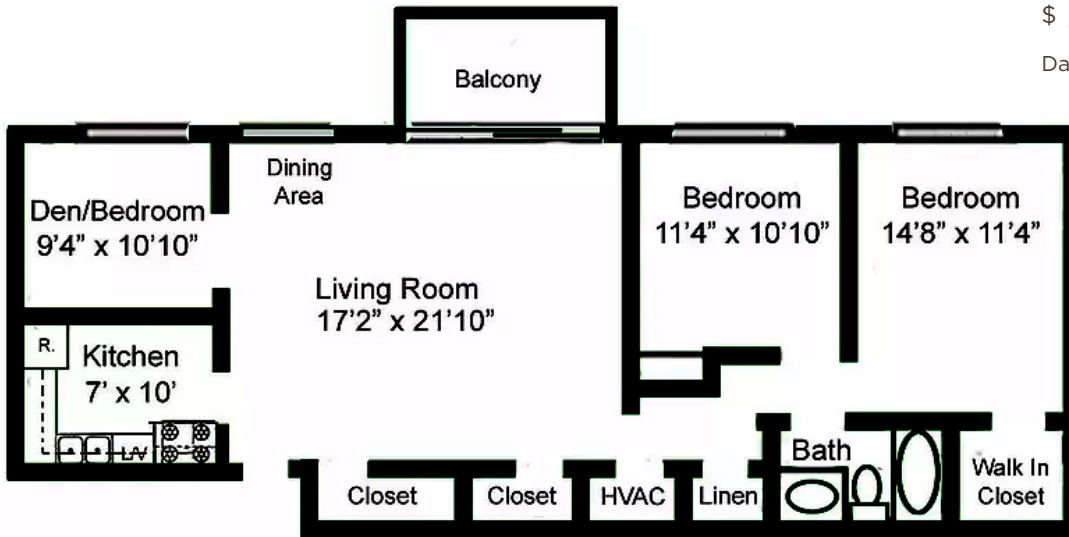
## C1

3 Bedroom 1 Bath

1,000 Sq. Ft.\*

\$ \_\_\_\_\_

Date Available \_\_\_\_\_



3403 Lancaster Pike Wilmington, DE 19805  
dupontpointe@aionmanagement.com | dupontpointe.com

**302-998-0088**

**AION**  
MANAGEMENT