

# SAFETY TIPS THINGS TO CONSIDER WHEN DRIVING AROUND SCHOOL BUSES

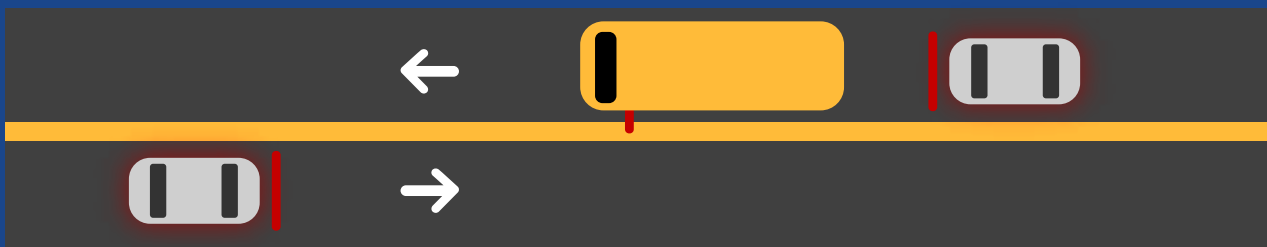
With school in full session now, it is important to heighten our awareness and become more vigilant when in close proximity to moving and stopped school buses on our roadways. Additionally, many drivers will be encountering situations with school buses in transport of children and traversing marked school zones in the vicinity of the schools

## SCHOOL BUS-CROSSWALK INFORMATION

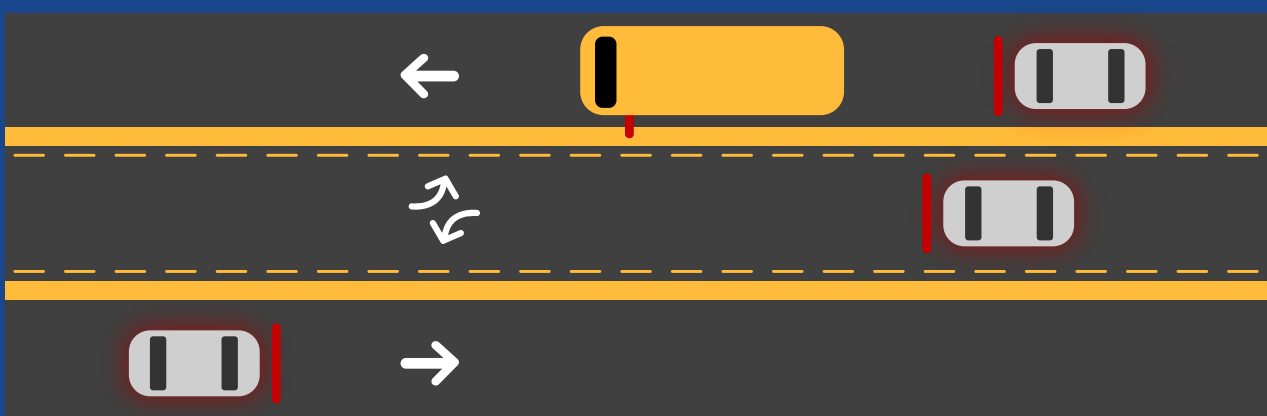
- Many state laws requires drivers to stay at least a minimum distance traveling behind a school bus at all times.
- Motorists must stop for school buses and school vans when red lights are flashing. Be on the lookout for flashing yellow and red lights, and be ready to stop.
- Never pass a school bus when its stop sign arm is down and red lights are flashing.
- Do not begin driving again until the flashing red lights are turned off, the stop sign is put back in place and the bus begins moving.
- Be aware of children exiting the bus and moving into the roadway both in front and to the rear of the bus.
- Violations are potentially dangerous, traffic citation fines are excessive and multiple violations can correlate to a suspended CDL.
- Speed within the school zone is 15 mph hour.
- On multi-lane roadways passing slower or stopped vehicles going in the same direction is prohibited as it is vision obstruction.
- You must come to complete stop when the school crosswalks are occupied by pedestrians.



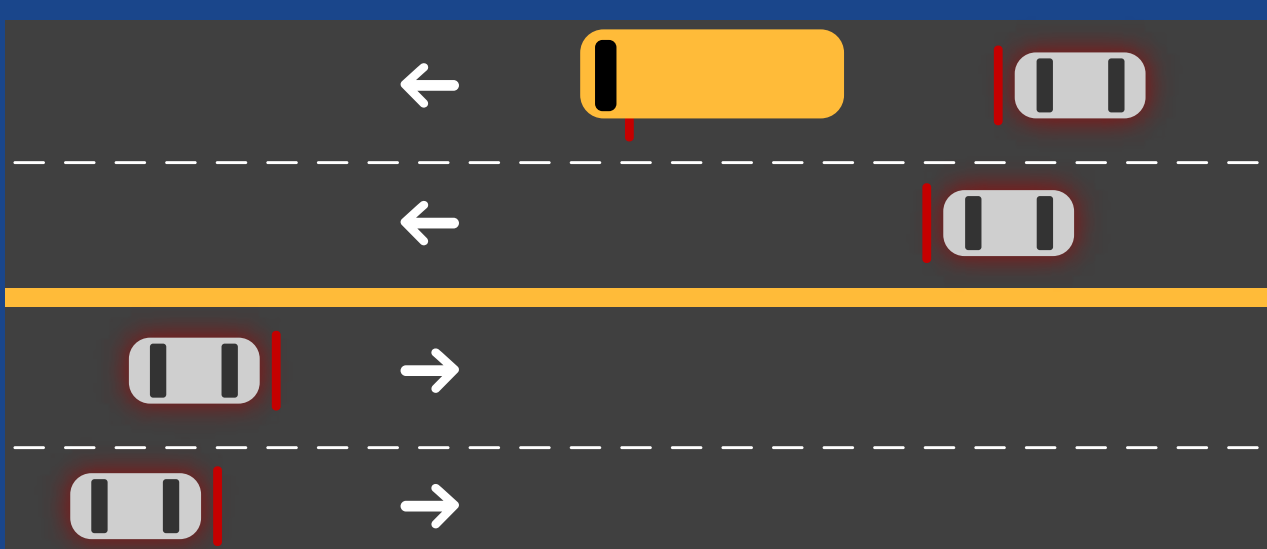
### TWO-LANE ROADWAY:



### TWO-LANE ROADWAY WITH CENTER TURNING LANE:



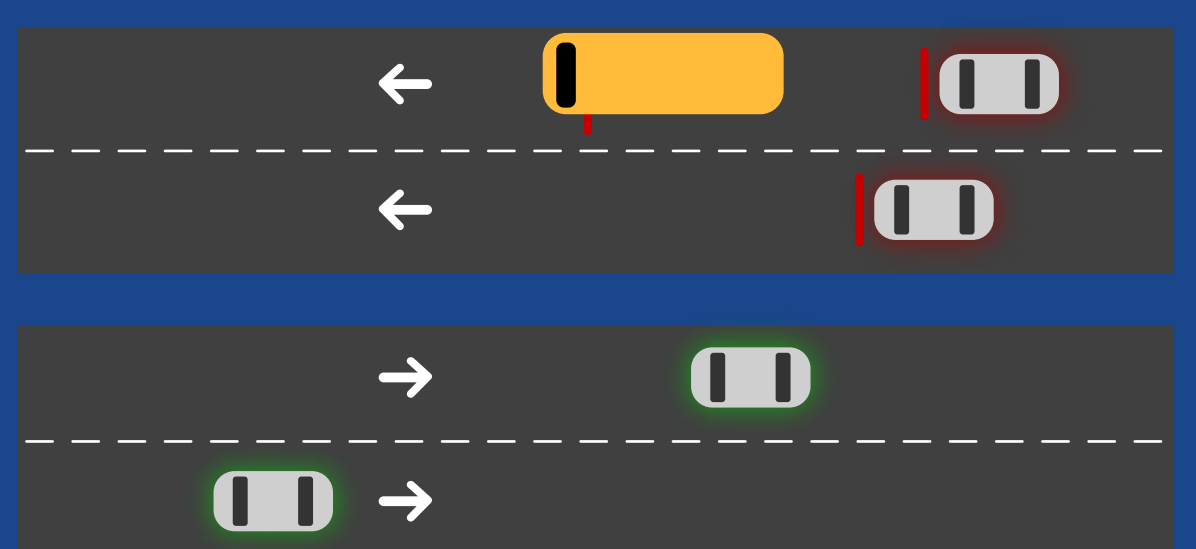
### FOUR-LANE ROADWAY WITHOUT A MEDIAN SEPARATION



WHEN SCHOOL BUS STOPS FOR PASSENGERS, ALL TRAFFIC FROM BOTH DIRECTIONS MUST STOP

THE FOLLOWING ILLUSTRATIONS DEPICT A VARIETY OF ROADWAY SCENARIOS THAT YOU MAY ENCOUNTER WITH SCHOOL BUSES THAT MAY REQUIRE ACTION ON YOUR PART:

### DIVIDED HIGHWAY OF FOUR LANES OR MORE WITH A MEDIAN SEPARATION



WHEN SCHOOL BUS STOPS FOR PASSENGERS, ONLY TRAFFIC FOLLOWING THE BUS MUST STOP