



HILLWOOD  
HOMES

# SKYE MEADOWS

WILLOW PLAN

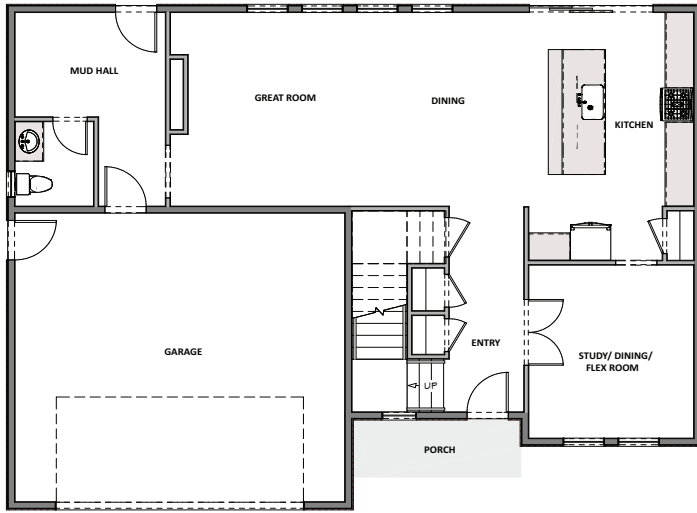


3 - 6 BEDROOMS | 2.5 - 3.5 BATHROOMS | 2 - 4 CAR GARAGE  
2,749 FINISHED SQ. FT. | 3,992 TOTAL SQ. FT.

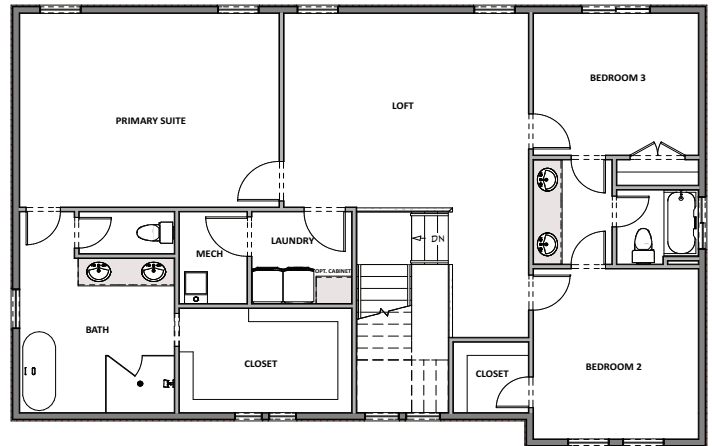
## HOME FEATURES

- Open Kitchen and Living Room
- Kitchen Island
- Master Bedroom Walk-in Closet
- Mud and Laundry Room off Garage
- 9' Ceilings on Main Floor and Basement
- 8' Doors on Main Floor
- Quartz Countertops in Kitchen and Bathrooms
- Tile Flooring in Bathroom and Laundry
- Moen Gibson Chrome plumbing fixtures
- Stainless Steel Whirlpool Appliances
- Energy Saving Low-E Dual Glazed White Vinyl Windows
- Full Front Yard Landscaping with Automatic Sprinkler System

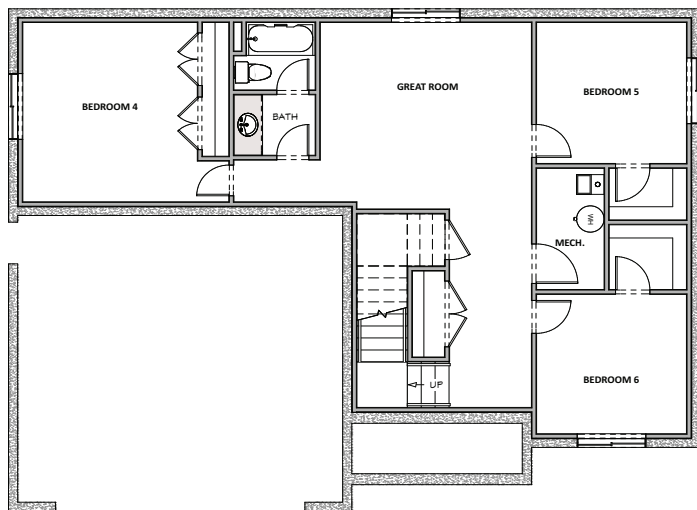
**MAIN FLOOR**  
Approx 1,243 Sq. Ft.



**UPPER FLOOR**  
Approx 1,506 Sq. Ft.



**OPTIONAL FINISHED BASEMENT**  
Approx 1,243 Sq. Ft.



Hillwood Homes Sales | 801.917.2837

HillwoodHomes.com