



HILLWOOD
HOMES

SKYE MEADOWS

SAVANNAH PLAN



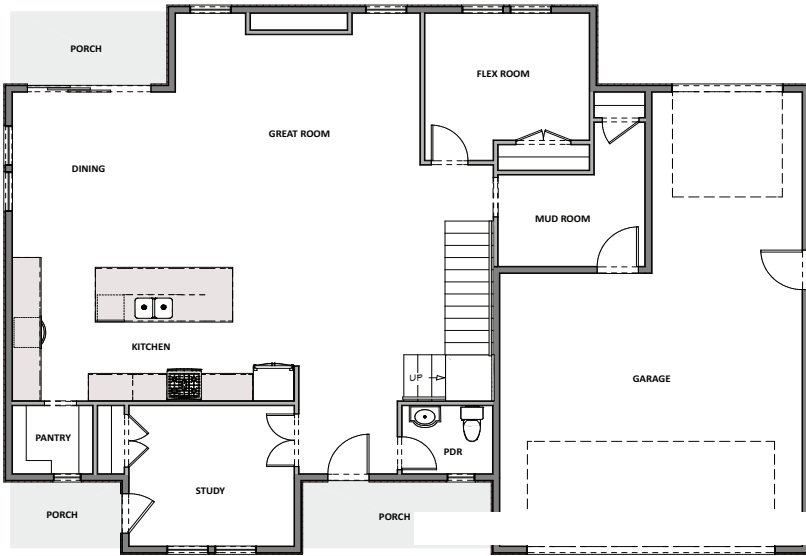
4 - 7 BEDROOMS | 3.5 - 5.5 BATHROOMS | 2 - 4 CAR GARAGE

3,517 FINISHED SQ. FT. | 5,025 TOTAL SQ. FT.

HOME FEATURES

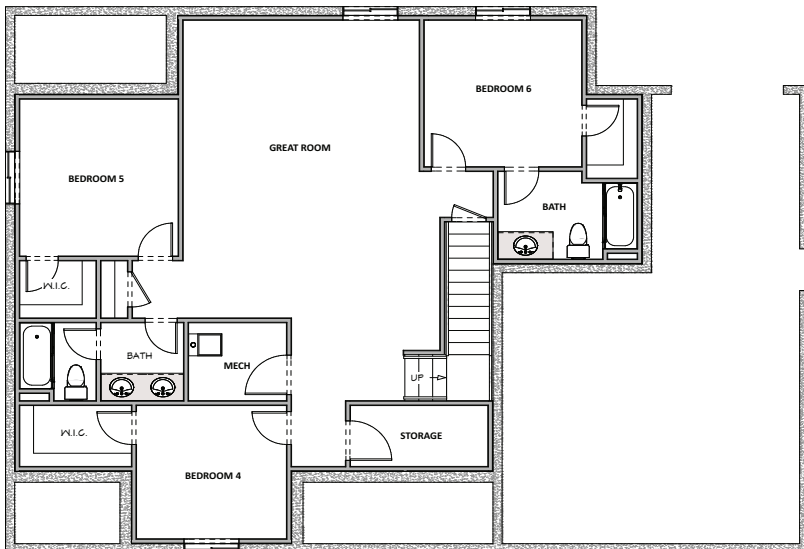
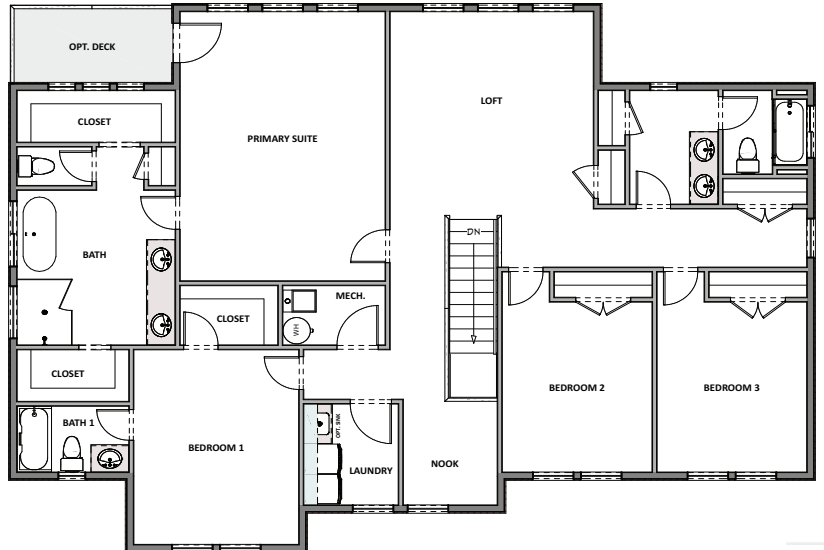
- Open Kitchen and Living Room
- Kitchen Island
- Master Bedroom Walk-in Closet
- Mud and Laundry Room off Garage
- 9' Ceilings on Main Floor and Basement
- 8' Doors on Main Floor
- Quartz Countertops in Kitchen and Bathrooms
- Tile Flooring in Bathroom and Laundry
- Moen Gibson Chrome plumbing fixtures
- Stainless Steel Whirlpool Appliances
- Energy Saving Low-E Dual Glazed White Vinyl Windows
- Full Front Yard Landscaping with Automatic Sprinkler System

MAIN FLOOR
Approx 1,508 Sq. Ft.



**HILLWOOD
HOMES**

UPPER FLOOR
Approx 2,009 Sq. Ft.



OPTIONAL FINISHED BASEMENT
Approx 1,508 Sq. Ft.

