



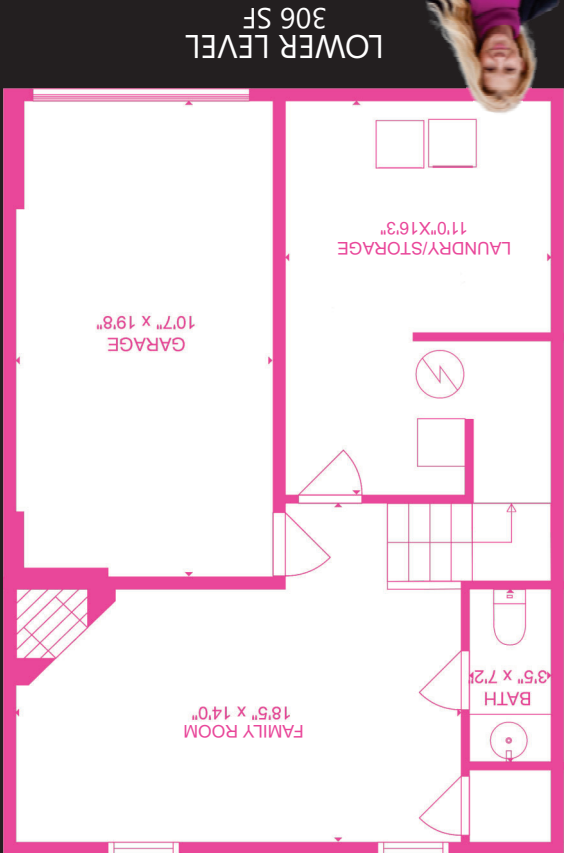
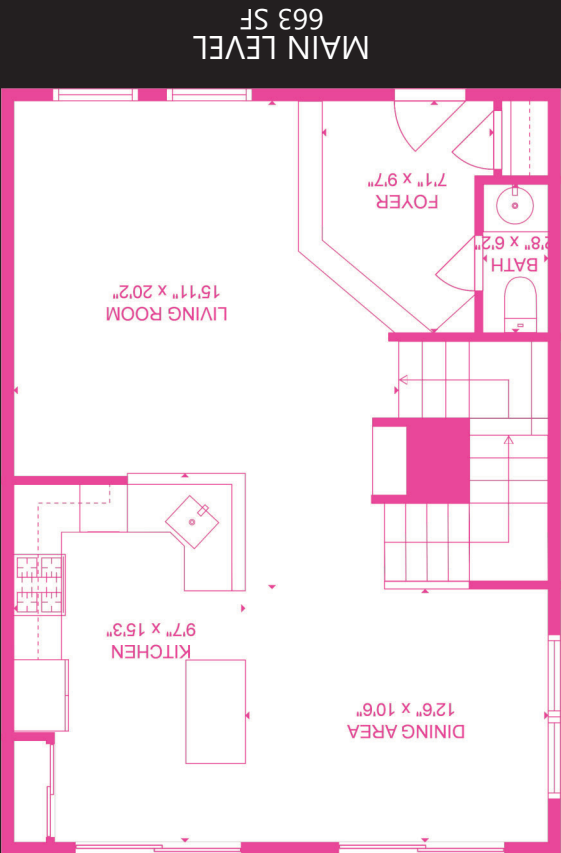
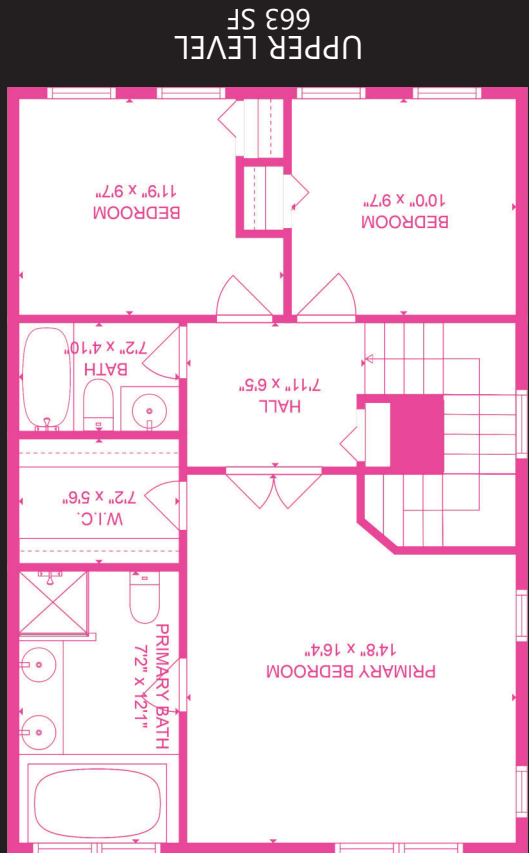
KIM & CO
REAL ESTATE PARTNERS
OF NORTHERN VIRGINIA

KIM DARWAZA
REALTOR,® GRI, CRS, ABR, CDPE
Lifetime NAR Top Producer | Re/Max Hall of Fame
kim@kimdarwaza.com
https://kimberly-darwaza.remax.com
703-856-2254
Licensed in Virginia

RE/MAX Executives
Each Office Independently Owned & Operated
12001 Lee Jackson Memorial Hwy
Suite 200
Fairfax, Virginia 22033
All Information Contained is Deemed Reliable, But Not Guaranteed



VIEW VIRTUAL TOUR: <https://Tours.ScottGoodsonPhotography.com/2219267>



Total Square Footage = 1,692 SF

FLOOR PLANS

All dimensions shown are approximate.
(Floor Plans not drawn to scale.)



6851 MALABAR COURT | CENTREVILLE, VIRGINIA 20121

Beautiful, End-Unit Townhome with 3 Bedrooms, 2 Full Baths, 2 Half Baths & Garage
in Compton Village close to I-66, Routes 28 & 29, shops and restaurants
Quick drive to Wegmans in Chantilly, Trader Joes & Dulles International Airport



COMPTON VILLAGE

Amenities include:

Pool • 2 Tennis Courts • General Purpose Court • 4 Tot Lots •
Nature Trails through Wooded Areas • Pond w/ Fountain • Gazebo

Additional information at:
www.ComptonVillage.org

SPECIAL FEATURES

- Ring Door Bell
- **Foyer** with coat closet and Palladian transom above
- **Refinished Hardwood Floors** on main level
- **Fresh Paint** throughout
- **Living Room** off Kitchen with two palladian windows
- **Kitchen** with center island, pantry, granite counters, custom tiled backsplash, undercabinet lighting, and stainless steel appliances including gas cooking
- **Dining Area** with sliding glass doors to patio and fenced backyard for easy grilling
- **Main Level Powder Room**
- **Large Owners' Suite** with double-door entry, vaulted ceiling and walk-in closet
- **Primary Full Bath** with soaking tub, built-in medicine cabinet, dual-sink vanity and glass-enclosed shower
- **Bedrooms 2 & 3** have closets and windows with blinds; Bedroom #2 has attic access
- **2nd Full Bathroom** with shower/tub combination
- **Upstairs Hall Linen Closet**
- **Updated Light Fixtures & Door Hardware** throughout
- **Lower Level** features a **Family Room** with recessed lighting, gas fireplace & closet; **2nd Powder Room**; and **Laundry Room** with ample storage
- **One-Car Garage** plus visitor parking spaces and ample street parking
- **Additional Exterior Storage** under stairs to home

