



HILLWOOD
HOMES

PONDEROSA PLAN



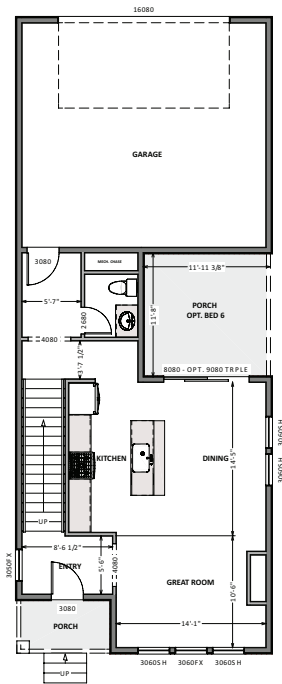
3 - 6 BEDROOMS | 2.5 - 3.5 BATHROOMS | 2 CAR GARAGE
2,028 FINISHED SQ. FT. | 2,784 TOTAL SQ. FT.

HOME FEATURES

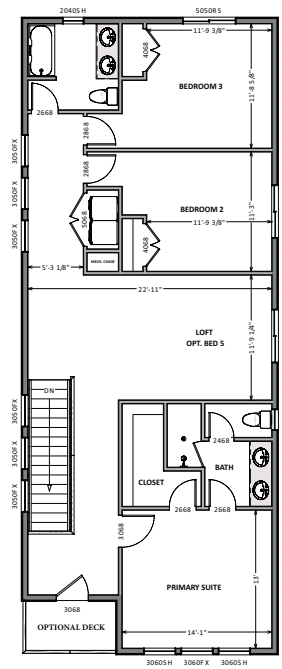
9' Ceilings on Main Floor and Basement
8' Doors on Main Floor
42" Stain Grade Upper Cabinets in Kitchen
Quartz Countertops in Kitchen and Bathrooms
Laminate Wood Flooring at Entry and Kitchen,
Mud Room, Powder
Tile Flooring in Bathroom and Laundry
Moen Gibson Chrome Plumbing Fixtures

95% Efficient Natural Gas Furnace
Wholly-Smooth Finished Sheetrock Walls
and Ceilings
Tile Primary Shower Surround
Large Energy Saving Low-E, Dual Glazed
White Vinyl Windows
2x6 Exterior Framed Walls

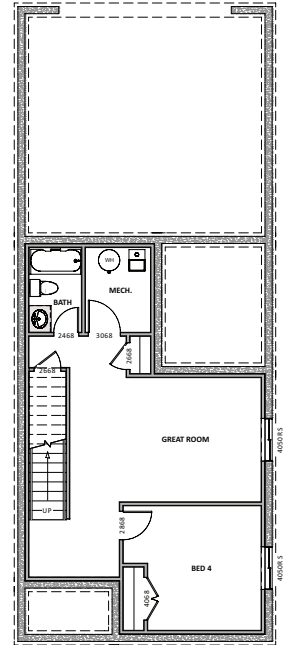
MAIN FLOOR
Approx 731 Sq. Ft.



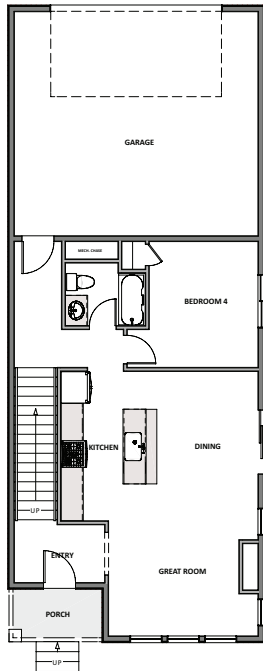
UPPER FLOOR
Approx 1,322 Sq. Ft.



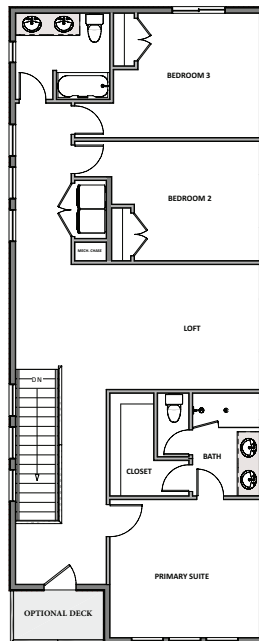
BASEMENT
Approx 731 Sq. Ft.



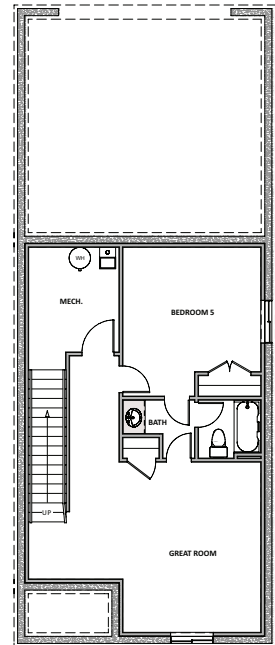
OPTIONAL 5 Bedroom



MAIN FLOOR
Approx 861 Sq. Ft.



UPPER FLOOR
Approx 1,322 Sq. Ft.



BASEMENT
Approx 861 Sq. Ft.

Hillwood Homes Sales | 385.275.3133

HillwoodHomes.com