



HILLWOOD  
HOMES

# Silver Creek Village

PONDEROSA PLAN



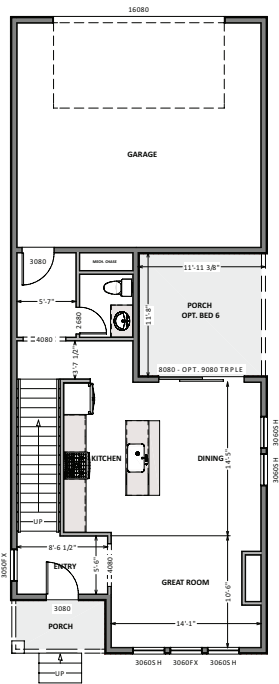
3 - 6 BEDROOMS | 2.5 - 3.5 BATHROOMS | 2 CAR GARAGE  
2,028 FINISHED SQ. FT. | 2,784 TOTAL SQ. FT.

## HOME FEATURES

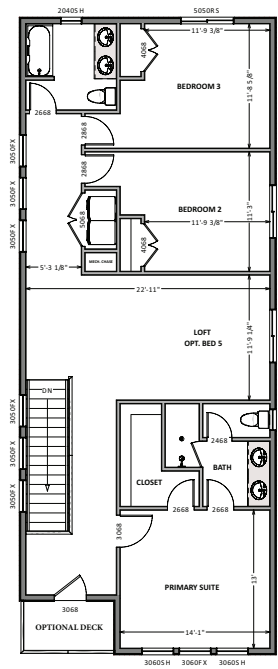
9' Ceilings on Main Floor and Basement  
8' Doors on Main Floor  
42" Stain Grade Upper Cabinets in Kitchen  
Quartz Countertops in Kitchen and Bathrooms  
Laminate Wood Flooring at Entry and Kitchen,  
Mud Room, Powder  
Tile Flooring in Bathroom and Laundry  
Moen Gibson Chrome Plumbing Fixtures

95% Efficient Natural Gas Furnace  
Wholly-Smooth Finished Sheetrock Walls  
and Ceilings  
Tile Primary Shower Surround  
Large Energy Saving Low-E, Dual Glazed  
White Vinyl Windows  
2x6 Exterior Framed Walls

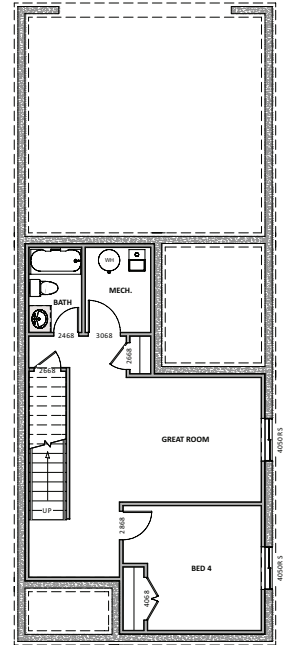
**MAIN FLOOR**  
Approx 731 Sq. Ft.



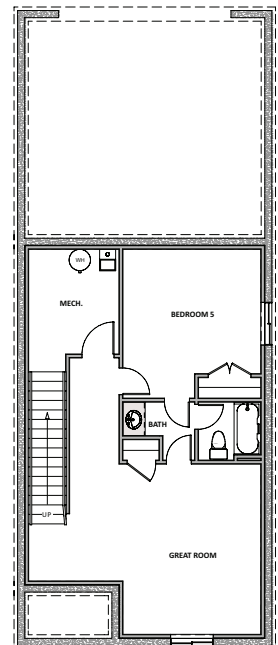
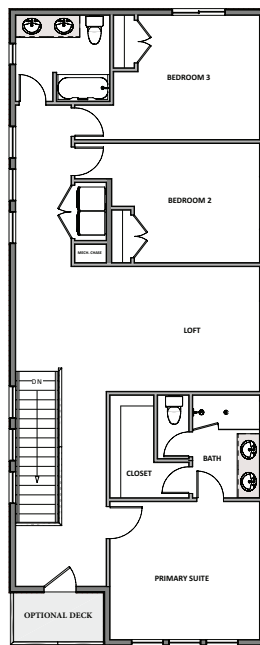
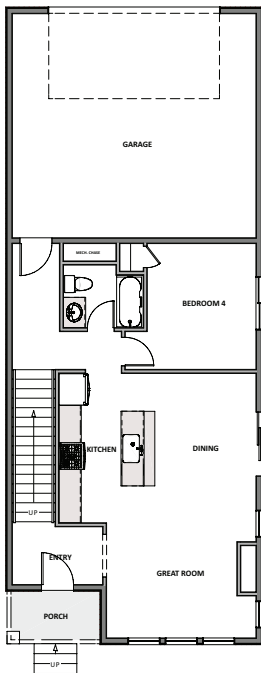
**UPPER FLOOR**  
Approx 1,322 Sq. Ft.



**BASEMENT**  
Approx 731 Sq. Ft.



**OPTIONAL 5 Bedroom**



**MAIN FLOOR**  
Approx 861 Sq. Ft.

**UPPER FLOOR**  
Approx 1,322 Sq. Ft.

**BASEMENT**  
Approx 861 Sq. Ft.