

SOUTH AFRICA



An unforgettable African experience

SOUTH AFRICA, located at the tip of the African continent is a unique country, rich in diverse landscapes and wildlife. South Africa is widely regarded as having the best infrastructure in Africa. What makes South Africa truly unique is its diversity. Generally South Africans are friendly and hospitable. This together with easy visa requirements, makes it a top hunting destination for foreigners and locals alike. English is widely spoken and understood. South Africa has a well-regulated hunting industry and hunting areas although vast and open, are generally easily accessible. South Africa has excellent medical facilities and a great climate which when coupled with being safer and more cost effective than most African hunting destinations, it is a top choice especially for a first time hunting safari. There are well-known attractions such as winelands, Blyde River Canyon, Blue Flag beaches, Kruger National Park and Table Mountain to name a few.

CONCESSION AREAS

There are a number of top-class concession areas in South Africa, with 50% of the most sought after species being hunted in Limpopo & Eastern Cape. THAT'S AFRICA SAFARIS is proud to hunt in four of the nine Provinces in South Africa with a total of five exclusive hunting areas which we are privileged to hunt and operate in. We have spent the better part of 25 years cultivating relationships with landowners and communities to be in a position to provide our clients with top class hunting areas and lodges.

LIMPOPO 'BOSVELD'

Hoedspruit is a small agricultural, tourism and fastly growing town located on the cusp of Limpopo about 70 km from the Orpen Gate of the Kruger National Park. We hunt a few areas near this town. What makes this area so special is its proximity to East Gate Airport. Most of the dangerous game hunts take place at these concession areas. The thick stuff or "bosveld" makes for an exhilarating and challenging hunt as one needs to get really close to the game in order to get an effective shot.

KALAHARI

Located in the North West Province, Vorstershoop is where the Kalahari hunting concession is situated. This province is extremely dry and hot, but when there is adequate rainfall the Kalahari is commonly known as the green Kalahari which makes the hunting quite challenging with the tall grass.

KAROO

The terrain is vast which makes it one of the most challenging hunting concessions. From flat plains to mountainous and rocky terrains the Karoo promises to provide an exceptional hunting experience.

OVERBERG

Baardskeerdersbos located in the Western Province of South Africa a mere two hour drive by motor vehicle from Cape Town International Airport. Species which can be hunted here are the elusive Vaal Rhebuck, Fallow Deer and Springbuck, to name a few. The winter months are the rainy and wet seasons which is when hunting predominantly occurs at this concession area.



ACCOMMODATION

A combination of rustic chalets or tented camps and luxury lodges are experienced at our vastly different South African Concession areas.

The accommodation included all the necessities amenities to make it as comfortable and enjoyable as possible. All laundry is done every daily and hunters and observes can expect to have a very comfortable stay.



Hosts and PROFESSIONAL HUNTERS

When hunting with That's Africa Safaris your expedition is led by experienced hosts and trained & licenced Professional Hunters ensuring not only unforgettable experience but everlasting memories.

Our aim is to part as friends. We believe in the traditional ethical walk and stalk method of hunting. Hunters therefore need to be fit.

CLIMATE AND CLOTHING

Limpopo is one of the warmer provinces in South Africa. Prepare for an average temperature of 26 degrees in the dry months from May to August and seasonal humid rainfall occurring from around October to February/ March. The Western Province is the exact opposite with winter rainfall occurring from June -Sept with Summer hot months around Nov-March. The Kalahari has extremely hot summers with temperatures reaching 40 degrees Celsius.

Please download our detailed Guide to hunting in Africa to learn more about what to pack.

Click this link to view our online store.

TRAVEL ARRANGEMENTS

There are a number ways to get to the different hunting concessions and these are area dependant.

International flights are available to OR Tambo or Cape Town International Airport. Thereafter a short domestic flight can be take to East Gate airport in Hoedspruit, when hunting in the Limpopo Province. Thereafter a short drive will be embarked to reach the concession area. From OR Tambo International Airport to the Kalahari concession Area it requires a 700km drive by road. The Overberg concession will be accessed by about 2 hour road drive after landing at Cape Town International Airport. Your hosts will always collect you from the Airport and take you to the respective hunting area.

Private Charter to the hunting areas are also possible and can be arranged.

HUNTING SEASON

Hunting season depends on which species are hunted. Please contact us to learn more.



SPECIES ON OFFER

DANGEROUS GAME:

Buffalo
Lion
Leopard
Elephant
Hippo
Rhino
Crocodile

PLAINS GAME:

Baboon
Barbery Sheep
Black Backed Jackal
Blessbuck Common
Bontebok

PLAINS GAME CONT:

Bushbuck Cape
Bushbuck Limpopo
Bushpig
Caracal
Civit Cat
Duiker Common
Duiker Blue
Duiker Red
Eland Cape
Fallow Deer
Genet Cat
Giraffe
Grysbok Sharpes
Grysbok Cape
Honey Badger
Hyena Spotted

PLAINS GAME CONT:

Hyena Brown
Impala
Klipspringer
Kudu
Lechewe Red
Nyala
Oryx
Ostrich
Oribe
Porcupine
Red Hartebees
Reedbuck Common
Rhebuck Mountain
Rhebuck Grey
Roan
Sable

PLAINS GAME CONT:

Servat Cat
Springbok Common
Springbok White
Springbok Copper
Steenbuck
Suni
Tsessebe
Warthog
Waterbuck
Wildebeyes Black
Wildebeyes Blue
Wildebeyes Golden
Zebra Burchell
Zebra Hartmann
Zebra Mountain

VALIE ENSLIN
+27 82 371 3117

valie@thatsafricasafaris.com

DANIELLE ROETS
+27 82 074 7610

info@thatsafricasafaris.com

79 BLYDE WILDLIFE
ESTATE, HOEDSPRUIT, 1380

PO BOX 4814, TYGERVALLEY,
BELLVILLE 7536

Reg no: 2020/848156/07

Tax no: 9123451255

www.thatsafricasafaris.com

MOZAMBIQUE



An unforgettable African experience

It is said that Mozambique is a country where the game, unfenced and as yet unmanaged by man, follows the rhythms of the season. This 310 000 square mile jewel of Southeast Africa is sparsely populated all along its Indian Ocean coastline, but it is further into the interior where large tracts of old untamed Africa still exists.

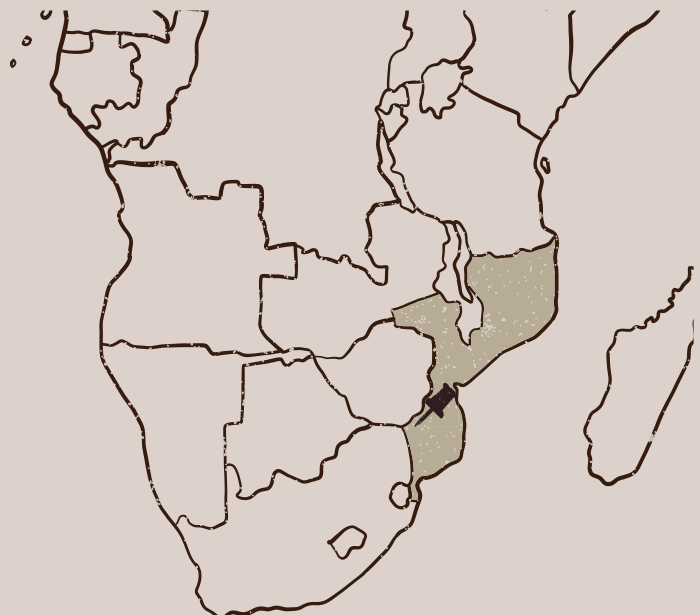
The country's previously depleted game reserves and national parks, are once again teeming with wildlife. The capital being Maputo and the official language spoken is Portuguese. Whether you are on a vast plain scanning for Zebra, in the thick jess bush tracking an Elephant or in the "miombo" woodlands searching for fresh signs Buffalo you will be hunting in the milieu of a bygone era.

CONCESSION AREAS

The **CHICULACUALA CONCESSION** is one of the few areas left in Africa where you have the opportunity of a true classical big game safari combined with a variety of plains game and fishing.

THAT'S AFRICA SAFARIS offers diverse hunting grounds, including vast grasslands, flood plains, palm savannahs and thick forest.

Our exclusive 370 000 acres are situated in the middle of more than 5 million unfenced acres of true African hunting.



ACCOMMODATION

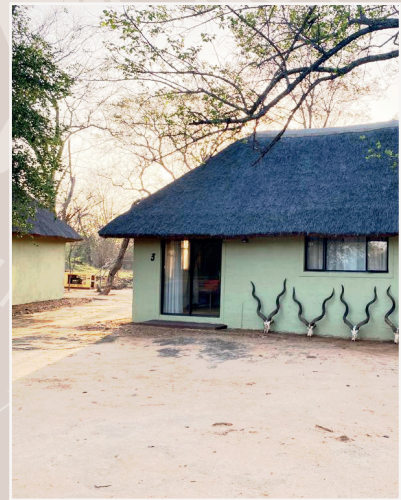
A rustic African experience will await you when you enter the concession.

The accommodation has all the necessary amenities to make it as comfortable and enjoyable as possible. The tented camp or basic bush lodge is situated in the most breathtakingly beautiful setting.

The concession and its accommodation represents a piece of Africa as it used to be with the breathtaking landscapes overshadowing the need for 5 star luxury accommodation.

There is clean running water, and all meals will be catered for.

All non-alcoholic and limited alcoholic beverages will be provided.



Hosts and PROFESSIONAL HUNTERS

Valie Enslin has been hunting for most of his adult life. When hunting with **That's Africa Safaris** your expedition is led by experienced hosts and trained & licenced Professional Hunters ensuring not only unforgettable experience but everlasting memories.

Our aim is to part as friends.

We believe in the traditional ethical walk and stalk method of hunting. Hunters therefore need to be fit. Our PH's, trackers and camp

CLIMATE AND CLOTHING

Mozambique has a tropical to sub-tropical climate and experience two seasons namely a cool and dry season from April to September and a hot and humid season between October and March.

Temperatures are warmer near the coast and southern lowland regions compared to the higher inland regions. Average temperatures range between 20 C in the winter and 26 C in the summer.

Please download our detailed Guide to hunting in Africa to learn more about what to pack.

Click this link to view our online store.

TRAVEL ARRANGEMENTS

There are a number of ways to get to the hunting concession areas. International flights are available to OR Tambo in South Africa. Thereafter a short domestic flight can be taken to East Gate airport in Hoedspruit, RSA. We will then drive through the Kruger National Park to the Pafuri Border, entering Mozambique. The entire trip by road is 500km from start to finish of which most is by tar road. The other option is to fly internationally directly into Maputu, however the drive from Maputu airport to the concession is rather lengthy and most of the trip being on remote dirt roads. Alternatively, one can charter a small aircraft to fly to the bush strip, then it is a short 60km drive by dirt road to the concession area.

HUNTING SEASON

Hunting season is from July to end November



SPECIES ON OFFER

DAINGEROUS GAME:

Buffalo
Crocodile
Elephant
Hippo
Elephant
Leopard
Lion

PLAINS GAME:

Bushbuck
Duiker Common
Eland
Giraffe
Hyena
Impala
Kudu

PLAINS GAME CONT:

Nyala
Sable
Steenbuck
Suni
Warthog
Wildebees Black
Zebra

VALIE ENSLIN
+27 82 371 3117

valie@thatsafricasafaris.com

DANIELLE ROETS
+27 82 074 7610

info@thatsafricasafaris.com

79 BLYDE WILDLIFE
ESTATE, HOEDSPRUIT, 1380

PO BOX 4814, TYGERVALLEY,
BELLVILLE 7536

Reg no: 2020/848156/07

Tax no: 9123451255

www.thatsafricasafaris.com



2023 PRICELIST



SOUTH AFRICA

ZAMBIA

CAMEROON

MOZAMBIQUE

DAILY RATES

Amounts are per day

Mozambique hunts work on a min day requirement determined by the species hunted. Plains game may be added to the dangerous game hunt, but not hunted on its one.

Observers \$280 p/d

Trophy fees exclude animals shot for bait.

WHAT DOES THE DAILY RATE INCLUDE?

- Service of a licensed Professional Hunter, Tracker, Skinner and use of fully equipped 4x4 Hunting Vehicle in hunting area ;
- Necessary field and camp staff;
- Fully serviced Accommodation ranging from luxury to rustic tented camps depending on the concession area
- Meals (3X per day) and non-alcoholic drinks and table wines/beers
- Initial field preparation of trophies
- Transfer to and from East Gate Airport in Hoedspruit or OR Tambo International Airport depending on the Hunting Concession
- Laundry Services
- An emergency communication network and well stocked medical kit

WHAT DOES THE DAILY RATE EXCLUDE?

- Hard tack (Whiskey, Gin, Brandy Ect)
- All international and domestic Flights
- Firearms and Ammunition (Rifle Hire Fee:\$25 p/d p/rifle & ammunition at cost)
- Travel Insurance & Medical expenses
- All accommodation& meals/drinks before and after the hunt
- Firearm import and export permit fees;
- Hunting Permit
- Gratuities
- Bait animals
- Taxidermy costs
- Packing, dipping and shipping of trophies



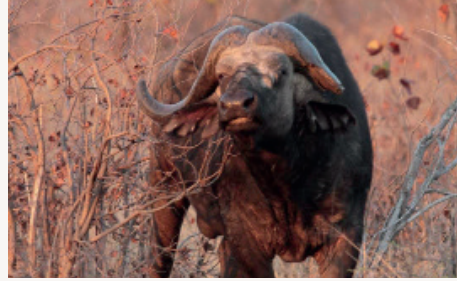


DANGEROUS GAME



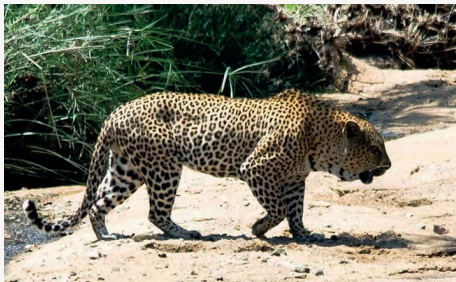
Elephant hunt

14 day min
 \$ 1350 p/d
 \$ 20 000 Trophy Fee
 (up to 40 pounds)
 Over 40 pounds - \$800 per pound



Buffalo hunt

7 day min
 \$ 1350 p/d
 \$ 5000 Trophy Fee



Leopard hunt

14 day min
 \$1350 p/d
 \$10000 Trophy Fee



Lion hunt

14 day min
 \$ 1350 p/d
 \$15 000 Trophy Fee

PLAINS GAME

Bushbuck	\$950	Nyala.....	\$2750
Duiker Common.....	\$750	Sable.....	\$4500
Eland	\$3500	Steenbuck.....	\$750
Zebra.....	\$1750	Suni.....	\$2150
Hyena.....	\$3850	Warthog.....	\$650
Impala.....	\$850	Wildebeyes Blue.....	\$1250
Kudu	\$2850		