



HILLWOOD  
HOMES

# SKYE MEADOWS

ORCHARD PLAN



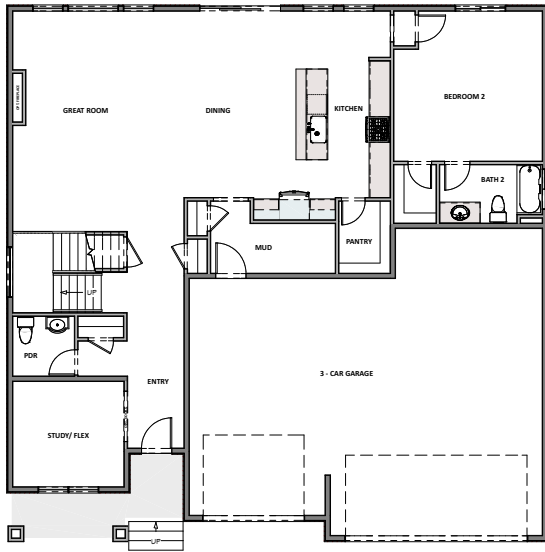
4 - 7 BEDROOMS | 3.5 - 5.5 BATHROOMS | 3 - 4 CAR GARAGE  
3,166 FINISHED SQ. FT. | 4,898 TOTAL SQ. FT.

## HOME FEATURES

- Open Kitchen and Living Room
- Kitchen Island
- Master Bedroom Walk-in Closet
- Mud and Laundry Room off Garage
- 9' Ceilings on Main Floor and Basement
- 8' Doors on Main Floor
- Quartz Countertops in Kitchen and Bathrooms
- Tile Flooring in Bathroom and Laundry
- Moen Gibson Chrome plumbing fixtures
- Stainless Steel Whirlpool Appliances
- Energy Saving Low-E Dual Glazed White Vinyl Windows
- Full Front Yard Landscaping with Automatic Sprinkler System

## MAIN FLOOR

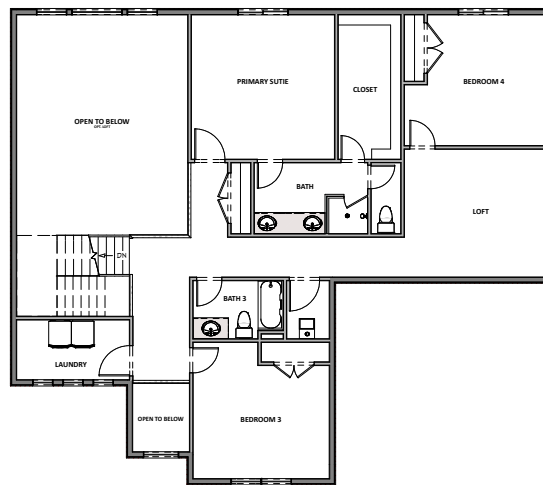
Approx 1,732 Sq. Ft.



# HILLWOOD HOMES

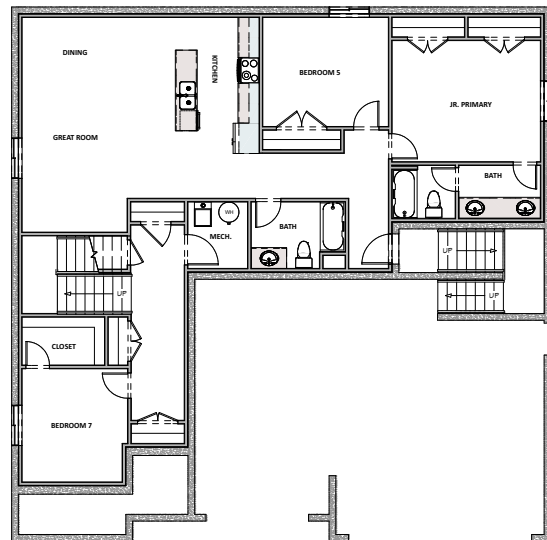
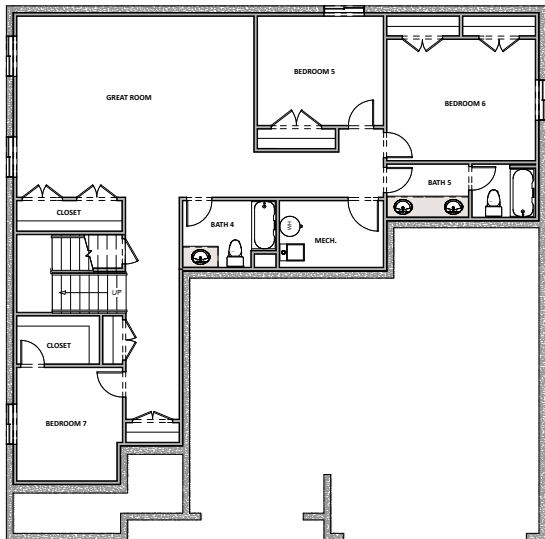
## UPPER FLOOR

Approx 1,434 Sq. Ft.



## OPTIONAL FINISHED BASEMENT

Approx 1,732 Sq. Ft.



ADU BASEMENT LAYOUT

Hillwood Homes Sales | 801.917.2837

HillwoodHomes.com